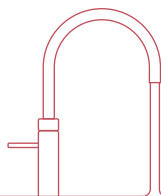


Installation guide CUBE

Read this guide before installation



Quooker®

Introduction

How the Quooker CUBE works

This guide assumes that a Quooker tank complete with Quooker tap has already been installed. For installation of the Quooker tank and tap, please refer to the installation guide which was provided with the Quooker tank. With the Quooker CUBE, you not only get hot, cold and boiling water, but also chilled sparkling and filtered water, all from your Quooker tap.

The LED ring on the tap lights up red when boiling water is being dispensed or when the tank is heating. The ring lights up blue when filtered water is being dispensed and flashes blue when sparkling water is used. To ensure the water quality, the Quooker CUBE has a built in Hollow Fibre Filter that cleans the water before it is dispensed. The CUBE's tank holds two litres of chilled sparkling water. When sparkling water is dispensed, the CUBE immediately refills with cold mains water. Please note: If no sparkling or filtered water is dispensed for approximately 14 days, we recommend you flush both sparkling and filtered water through for two minutes each. This will refill the CUBE's tank with fresh water and ensures an optimum water quality. The temperature of sparkling and filtered water cannot be adjusted. The amount of CO₂ in the sparkling water can also not be adjusted. An unlimited supply of filtered water can be dispensed. The temperature of the filtered water is reduced by 5°C as it is being dispensed and will therefore be cooler than the mains water.

Installation, maintenance and warranty

This guide assumes that a Quooker tank complete with Quooker tap has already been installed. To install the Quooker CUBE, a mains water connection and a spare power socket is needed. If no spare socket is available, a Quooker Powerswitch can be used. You can purchase the Powerswitch directly from Quooker.

It's not permitted to connect the CUBE to a reverse osmosis system or water-softener which lowers the pH level of the water. Clean the CUBE's ventilator fan once a year using a brush or vacuum cleaner. In addition, the filter inside the CUBE must be replaced annually. After 12 months, the CUBE will start beeping and the light on the CUBE tank will flash to indicate that the filter needs to be replaced.

Do not connect the CUBE if it is damaged. This may result in hazardous situations or harm the environment. When discarding the equipment, the compressor and the refrigerant in the compressor system must be discarded correctly, in an environmentally friendly manner. Used filters should be disposed of in the general waste.

Users

The Quooker tap may be used by children over the age of eight and people with reduced physical, sensory or intellectual capacity if they are supervised or have been told how to use the device safely. People who are not yet familiar with the Quooker system must be told how to use it safely and informed of the potential hazards associated with the use of the boiling-water tap.

Please note: Improper use may cause injury. Prevent children from playing with the tap, and do not let children clean or maintain the product without supervision. Keep the plug and the cable out of the reach of small children. The Quooker system is suitable for domestic purposes and use.

If connectors are defective, they must only be replaced by a qualified technician. "Tips for use" and an installation guide for the CUBE can also be found at www.quooker.ae

Declaration of conformity

Quooker Nederland B.V., Staalstraat 1, NL-2984 AJ Ridderkerk (Netherlands) hereby declares at its own risk that the Quooker CUBE is manufactured in accordance with the rules in the following directives:

- 2014/35/EU Low Voltage Directive (LVD)
- 2011/65/EU Restriction of Hazardous Substances (RoHS) Directive
- 2014/30/EU Electromagnetic Compatibility Directive (EMCD)

and complies with the following standards:

General product safety household and similar electrical appliances

EN 60335-1:2012 + AC:2014 + A11:2014

EN 60335-2-34:2013

Public exposure to electromagnetic fields (EMF)

EN 62233:2008 + AC:2008

Electromagnetic compatibility (EMC)

EN 55014-1:2017 + EN 55014-1:2006 + A1:2009 + A2:2011

EN 55014-2:2015 + EN 55014-2:1997 + AC:1997 + A1:2001 + A2:2008

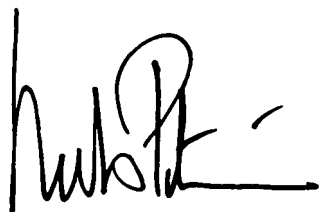
EN 61000-3-2:2014

EN 61000-3-3:2013

Restriction of hazardous substances

EN 50581:2012

The Netherlands, Ridderkerk, 01/03/2018

A handwritten signature in black ink, appearing to read 'Niels Peteri', with a horizontal line extending from the end.

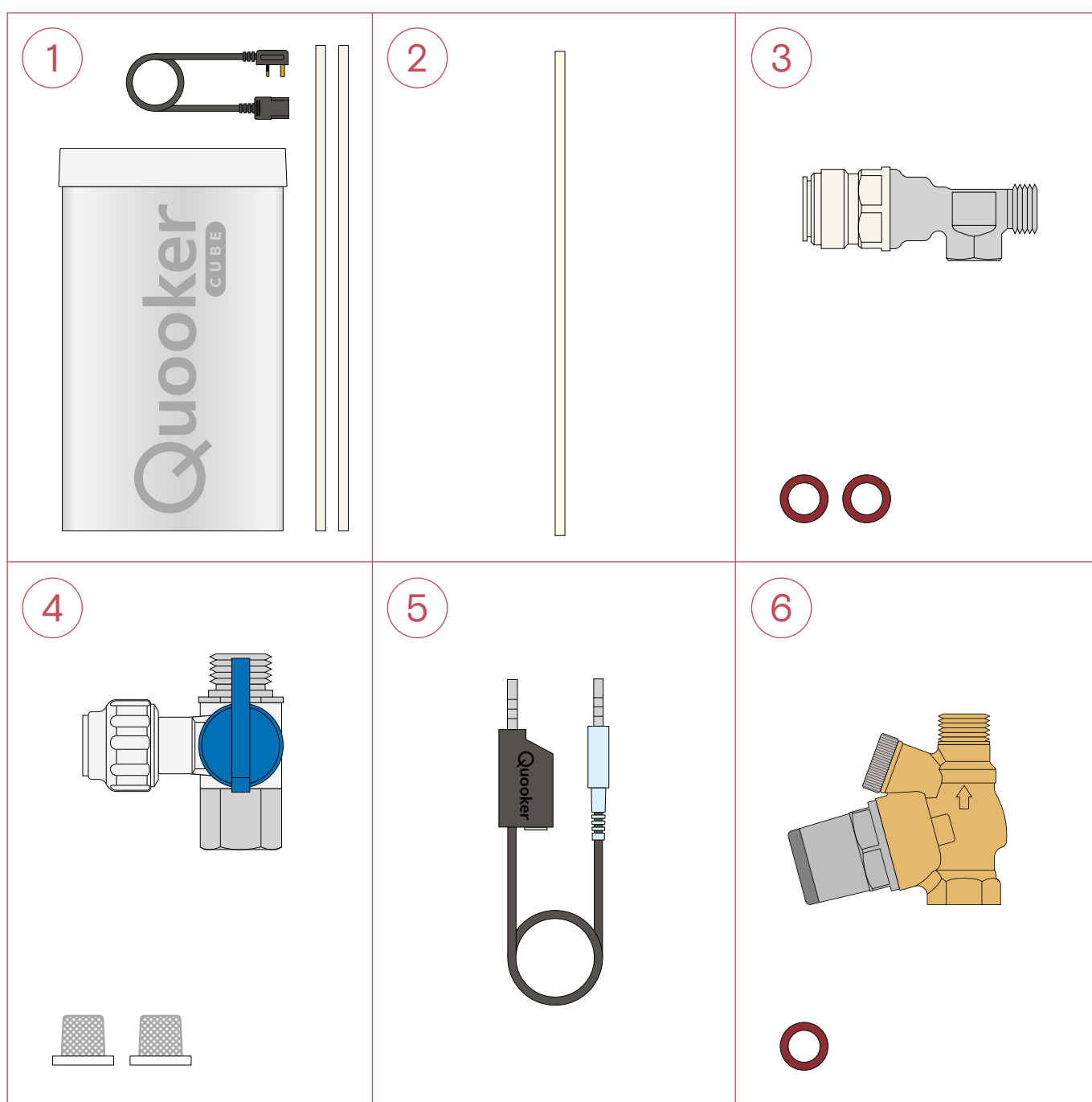
Niels Peteri, CEO

Technical specifications

Tank	CUBE
Voltage	230 V
Wattage*	100 W
Flow rate for filtered water*	1.4 litres / minute
Flow rate for sparkling water*	2 litres / minute, 4 litres / hour
Standby consumption*	12 W / hour
Chilling time*	40 minutes (60 minutes for first use)
Tank height	43 cm
Tank width	23.5 cm
Tank depth	44 cm
Min. water supply pressure	200 kPa (2 bar)
Max. water supply pressure	400 kPa (4 bar)
Max. CO ₂ pressure	400 kPa (4 bar)
Refrigerant	R134a 36g (0.0515 tonnes CO ₂ equivalent)
Climate rating	N (16°C–32°C)
IP rating	IP21
Water filter	1 Hollow Fibre filter
* These are average values.	

Pack contents

1. CUBE tank, power cable and two white connection hoses
2. Clear CO₂ hose
3. T-joint with two fibre washers
4. CUBE stop valve with two hose screens
5. Communication cable
6. Pressure reducing valve with fibre washer



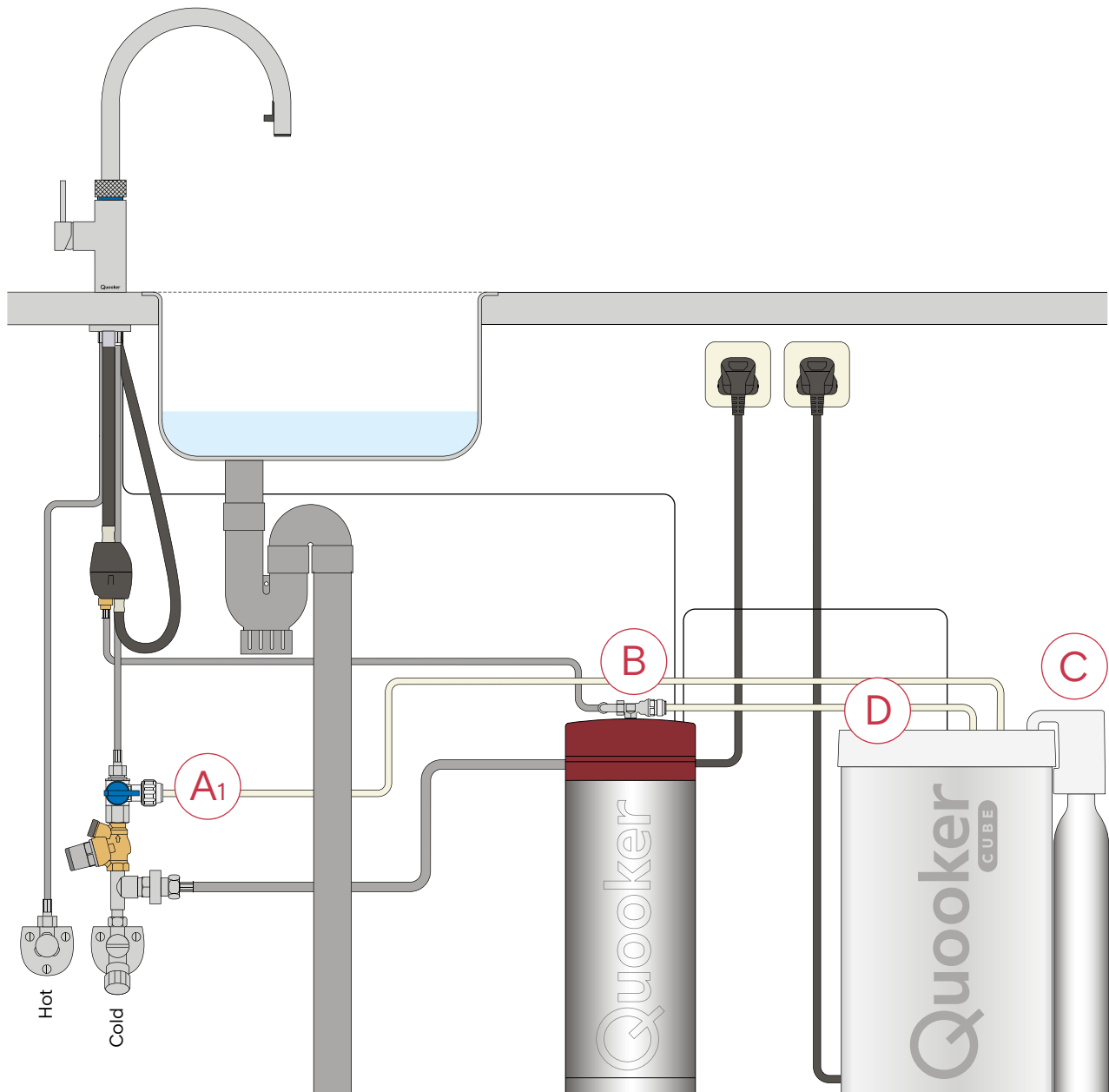
Installing the CUBE with a PRO3 tank

We recommend installing the CUBE in the following order:

- A1. Connect the water supply with a PRO3 tank
- B. Connect the CUBE to the Quooker tank
- C. Install the CO₂ cylinder
- D. Prepare the CUBE for use

The illustration below shows an example of a CUBE installation with a Quooker Flex tap and a PRO3 tank, and is for illustration purposes only. The CUBE installation is the same for all compatible Quooker taps. All installation guides are available online at www.quooker.ae.

For an overview of the CUBE with a PRO7 tank, please refer to the next page.



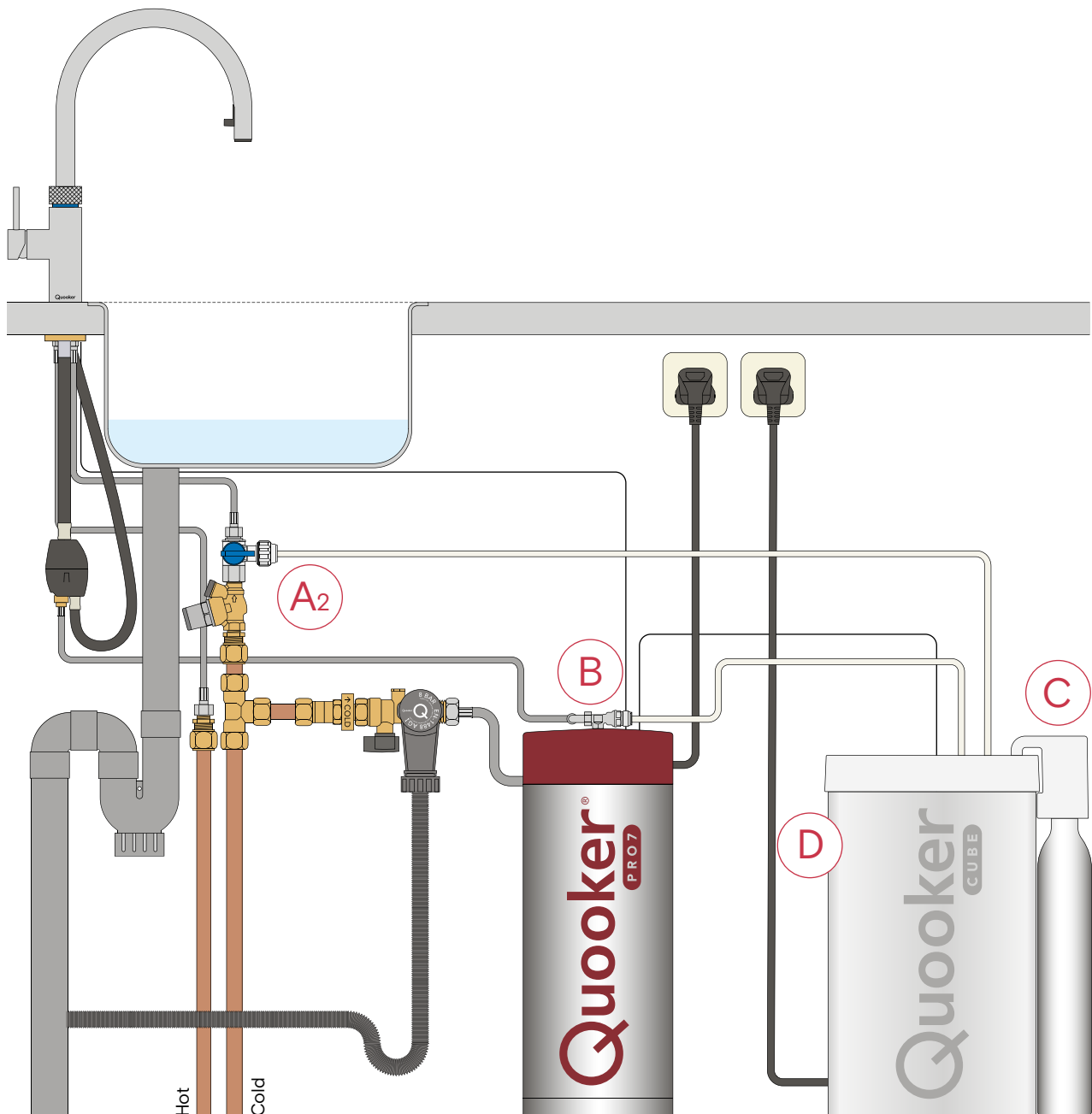
Installing the CUBE with a PRO7 tank

We recommend installing the CUBE in the following order:

- A2. Connect the water supply with a PRO7 tank
- B. Connect the CUBE to the Quooker tank
- C. Install the CO₂ cylinder
- D. Prepare the CUBE for use

The illustration below shows an example of a CUBE installation with a Quooker Flex tap and a PRO7 tank, and is for illustration purposes only. The CUBE installation is the same for all compatible Quooker taps. All installation guides are available online at www.quooker.ae.

For an overview of the CUBE with a COMBI tank, please refer to the next page.

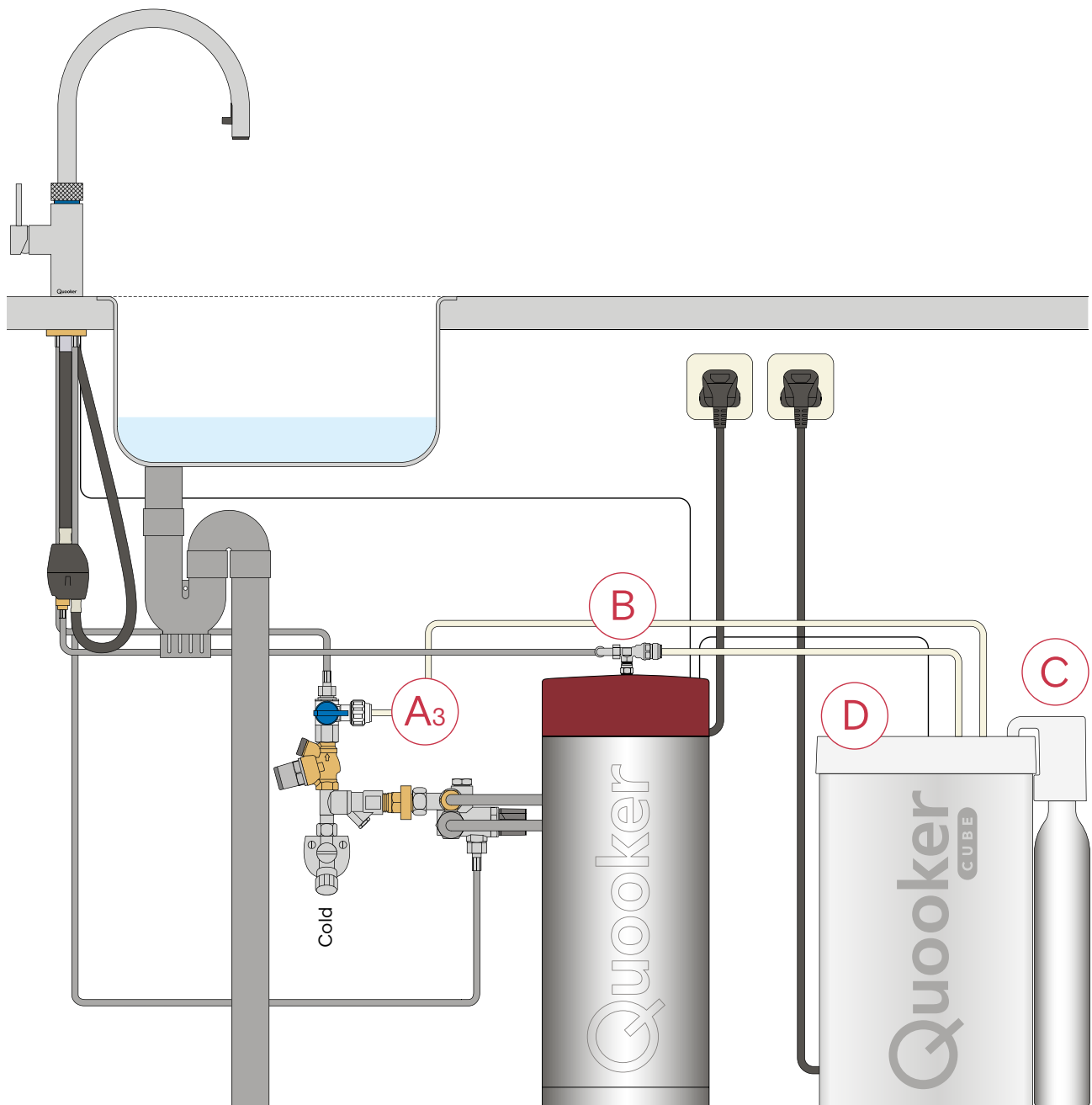


Installing the CUBE with a COMBI tank

We recommend installing the CUBE in the following order:

- A3. Connect the water supply with a COMBI tank
- B. Connect the CUBE to the Quooker tank
- C. Install the CO₂ cylinder
- D. Prepare the CUBE for use

The illustration below shows an example of a CUBE installation with a Quooker Flex tap and a COMBI tank, and is for illustration purposes only. The CUBE installation is the same for all compatible Quooker taps. All installation guides are available online at www.quooker.ae.



Installation requirements

Please read the following before you start the installation.

Placing the CUBE

Make sure that the CUBE tank has enough room within the kitchen cabinet. Please bear in mind that the CUBE must remain accessible for future service and maintenance. We recommend leaving at least 10 cm of free space behind the CUBE tank for ventilation. The CUBE must be placed within 90 cm of the Quooker tank.

Ventilation in the kitchen cupboard

The kitchen cabinet in which the CUBE is installed must be sufficiently ventilated to ensure optimal operation. We therefore recommend cutting an opening measuring 20 × 20 cm (400 cm²) in the rear panel of the cabinet or equivalent. If there is not enough free space for ventilation behind the rear panel, we also recommend making an opening in the bottom of the cabinet, under the CUBE, for further ventilation.

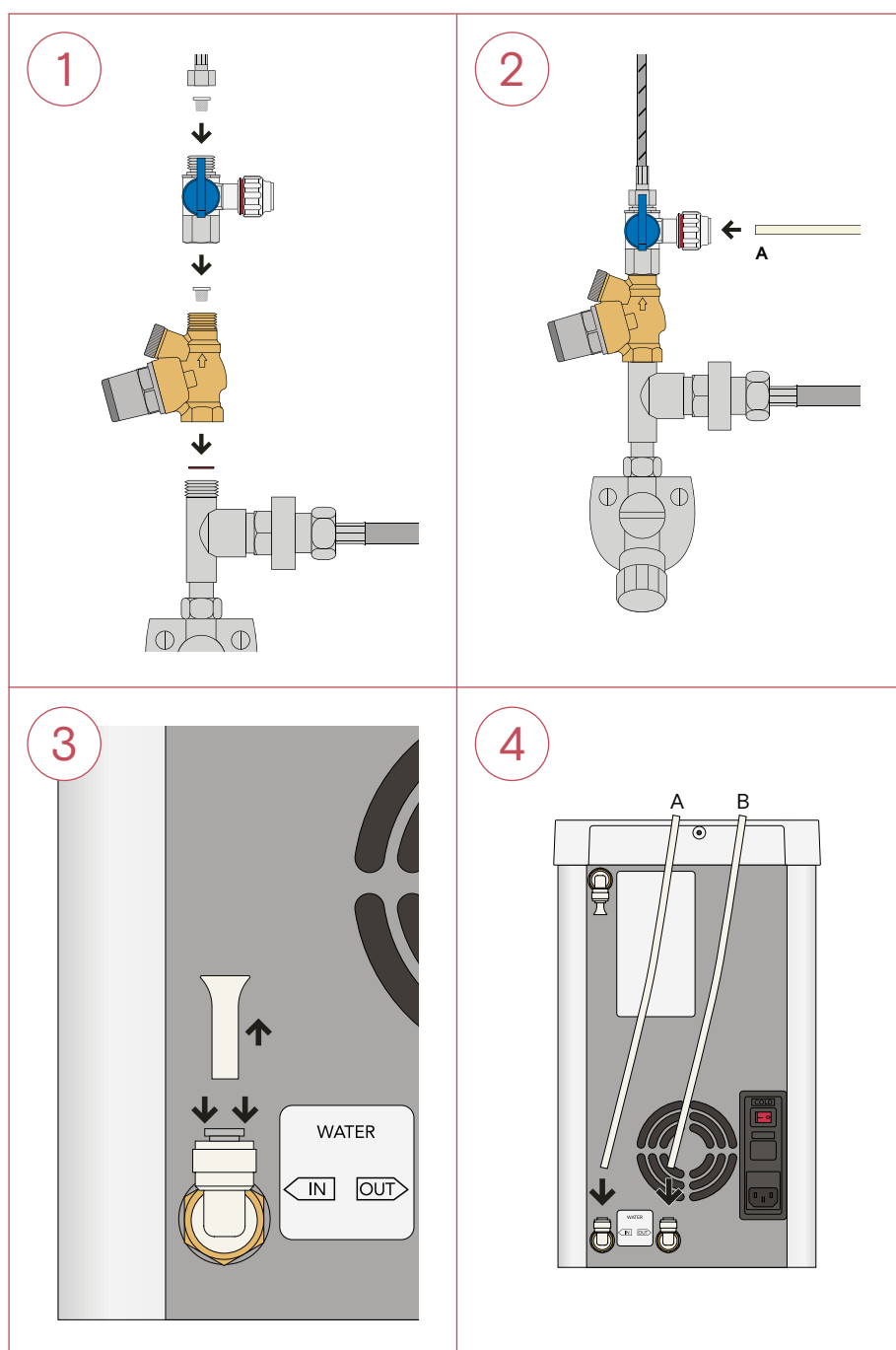
Extra socket

The CUBE installation requires an earthed power socket. If there is no spare socket available, you have the option of purchasing a Quooker Powerswitch. The CUBE's maximum power consumption is 100 W. Only use the power cable provided. If the power cable is damaged, it must be replaced with an identical one. If necessary, contact Quooker for a replacement cable.

A1

Connect the water supply with a PRO3

- The plastic hoses are connected using push-fit connections. No additional sealants are required. Make sure that the plastic hoses are not bent or pulled taut during installation.
- The maximum incoming water pressure allowed is 4 bar.
- The Q-shaped button on top of the tank is the on / off switch. Once the water is up to temperature the light on the tank will fade in and out.



1 Connect the CUBE stop valve

Switch off the Quooker tank and pull the plug from the power socket. Turn off the mains water supply. Disconnect the tap's cold water supply and remove the old hose screen. Place the fibre washer into the pressure reducing valve. Connect the valve to the cold water supply and tighten. Place the first new hose screen into the pressure reducing valve then connect the CUBE stop valve onto it and tighten. Place the second hose screen into the CUBE stop valve, then connect the tap's cold water hose to the stop valve and tighten it.

2 Connect the white hose

Push one of the white hoses (A) provided into the CUBE stop valve. Ensure the hose is fully inserted into the stop valve. Tighten the coupling so that the red marking is no longer visible.

3 Remove protective caps

Remove both protective caps from the (IN) and (OUT) push fit connections by pushing the grey ring down and pulling them out.

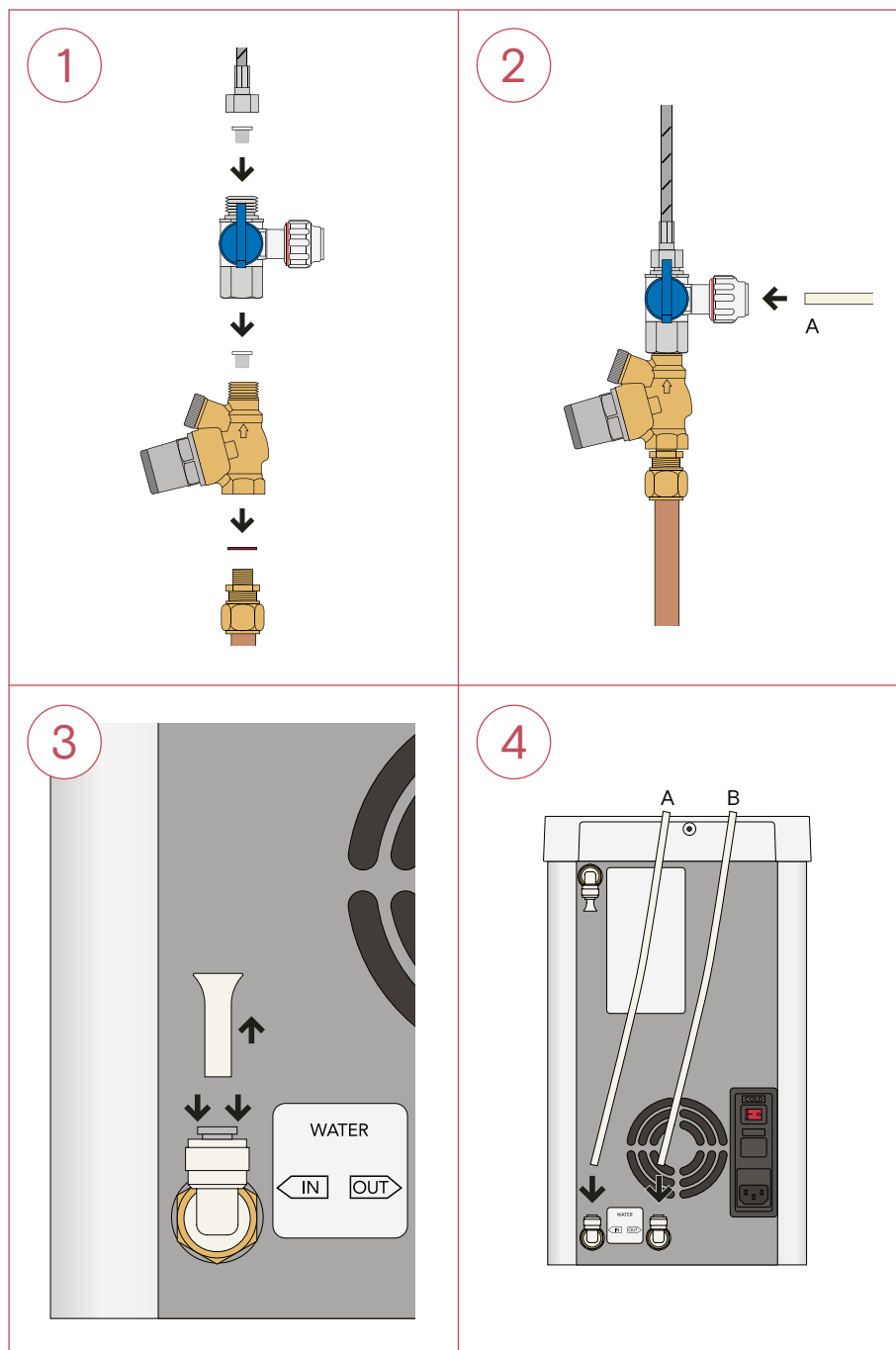
4 Connect the CUBE

Push the white hose (A) into the water inlet on the CUBE (IN). Push the second white hose (B) into the water outlet on the CUBE (OUT). Ensure the hoses are fully inserted into the push fit connections and carefully pull on them to ensure they are secured firmly in place.

A2

Connect the water supply with a PRO7

- The plastic hoses are connected using push-fit connections. No additional sealants are required. Make sure that the plastic hoses are not bent or pulled taut during installation.
- The maximum incoming water pressure allowed is 4 bar.
- The Q-shaped button on top of the tank is the on / off switch. Once the water is up to temperature the light on the tank will fade in and out.



1 Connect the CUBE stop valve

Switch off the Quooker tank and pull the plug from the power socket. Turn off the mains water supply. Disconnect the tap's cold water supply and remove the old hose screen. Place the fibre washer into the pressure reducing valve. Connect the valve to the cold water supply and tighten. Place the first new hose screen into the pressure reducing valve then connect the CUBE stop valve onto it and tighten. Place the second hose screen into the CUBE stop valve, then connect the tap's cold water hose to the stop valve and tighten it.

2 Connect the white plastic hose

Push one of the white plastic hoses provided into the CUBE stop valve (A). Ensure the hose is fully inserted into the stop valve. Tighten the coupling so that the red marking is no longer visible.

3 Remove protective caps

Remove both protective caps from the (IN) and (OUT) push fit connections by pushing the grey ring down and pulling them out.

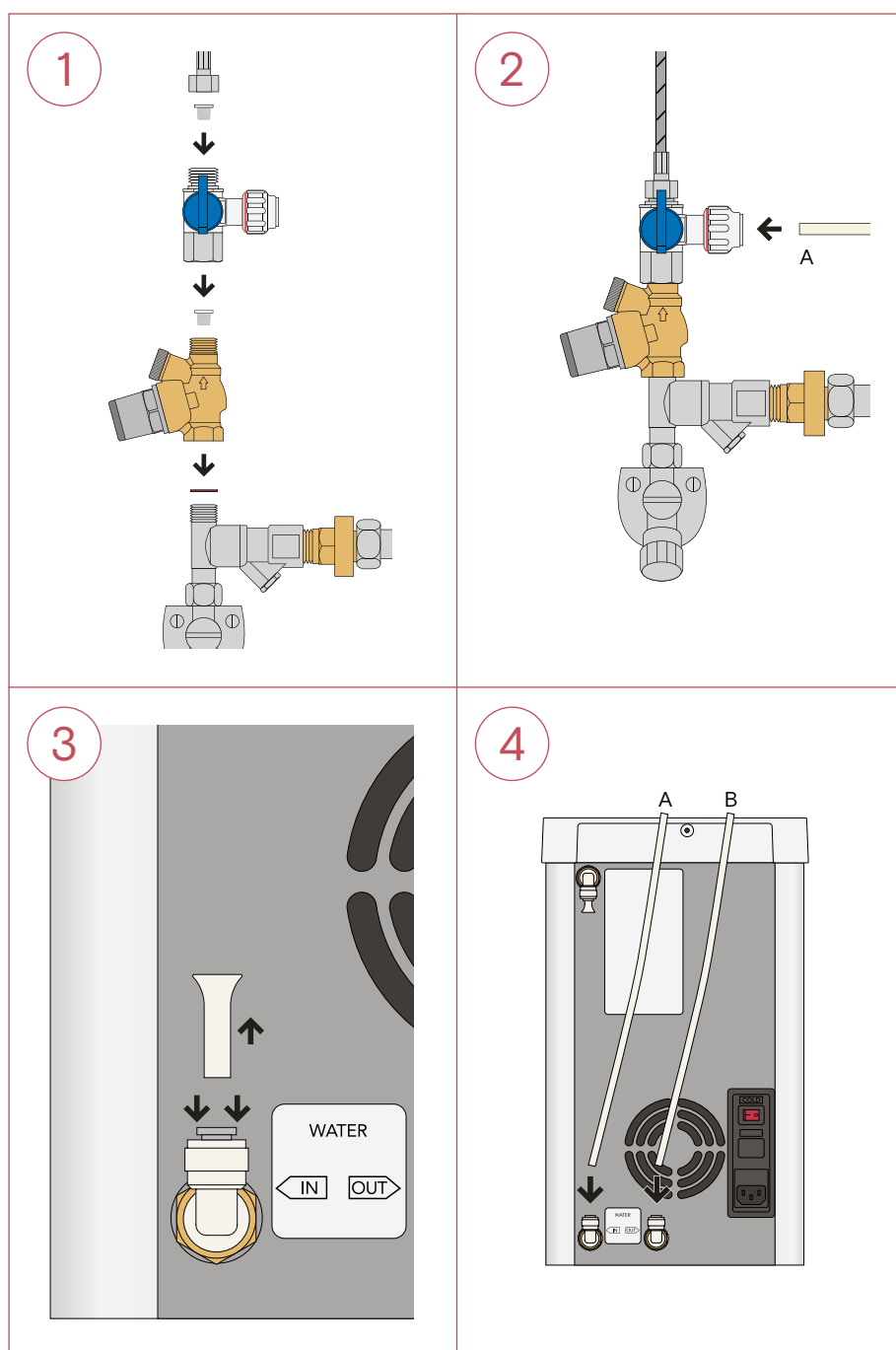
4 Connect the CUBE

Push the white plastic hose (A) into the water inlet on the CUBE (IN). Push the second white hose (B) into the water outlet on the CUBE (OUT). Ensure the hoses are fully inserted into the push fit connections and carefully pull on them to ensure they are secured firmly in place.

A3

Connect the water supply with a COMBI

- The plastic hoses are connected using push-fit connections. No additional sealants are required. Make sure that the plastic hoses are not bent or pulled taut during installation.
- The maximum incoming water pressure allowed is 4 bar.
- The Q-shaped button on top of the tank is the on / off switch. Once the water is up to temperature the light on the tank will fade in and out.



1 Connect the CUBE stop valve

Switch off the Quooker tank and pull the plug from the power socket. Turn off the mains water supply. Disconnect the tap's cold water supply and remove the old hose screen. Place the fibre washer into the pressure reducing valve. Connect the valve to the cold water supply and tighten. Place the first new hose screen into the pressure reducing valve then connect the CUBE stop valve onto it and tighten. Place the second hose screen into the CUBE stop valve, then connect the tap's cold water hose to the stop valve and tighten it.

2 Connect the white plastic hose

Push one of the white plastic hoses provided into the CUBE stop valve (A). Ensure the hose is fully inserted into the stop valve. Tighten the coupling so that the red marking is no longer visible.

3 Remove protective caps

Remove both protective caps from the (IN) and (OUT) push fit connections by pushing the grey ring down and pulling them out.

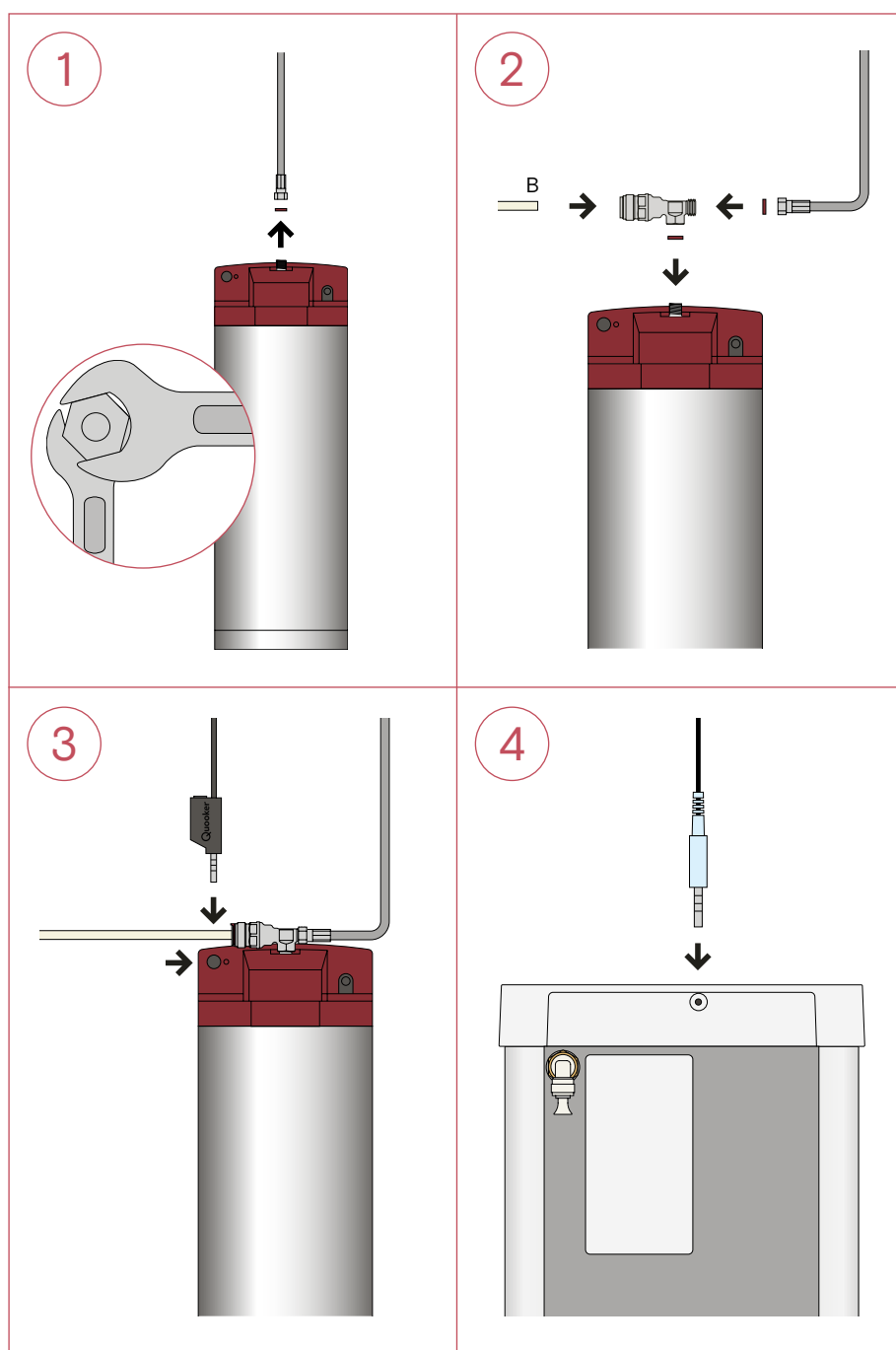
4 Connect the CUBE

Push the white plastic hose (A) into the water inlet on the CUBE (IN). Push the second white hose (B) into the water outlet on the CUBE (OUT). Ensure the hoses are fully inserted into the push fit connections and carefully pull on them to ensure they are secured firmly in place.

B

Connect the CUBE to the Quooker tank

- Please note: Make sure that the hose between the Quooker tank and tap has cooled down before removing it.
- There are two jack plug ports at the back of the Quooker tank cover which will be used to connect the Quooker tap and the CUBE. One of the ports is covered by a plastic cap that must first be removed.
- The CUBE and the tap are connected on top of the tank using a mini jack connector.



1 Remove the boiling water hose

Remove the boiling water hose from the top of the tank using a 12 mm and a 14 mm spanner.

2 Install T-joint

Place a new small fibre washer onto the tank connection then connect the T-joint using the same spanners. Remove the old fibre washer from the boiling hose and replace it with a new one. Connect it to the T-joint and tighten. Push the white hose (B) into the T-joint push fit connection. Check that the hose is installed correctly by carefully pulling on it to ensure it is secured firmly in place.

3 Connection to the Quooker tank

Remove the rubber blanking piece covering the secondary port at the back of the Quooker tank cover. Insert the black jack plug connector firmly into the port, until no more copper is visible.

4 Connection to the CUBE

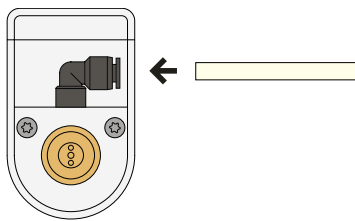
Insert the blue jack plug connector (on the other end of the cable) into the blue port at the back of the CUBE cover.

C

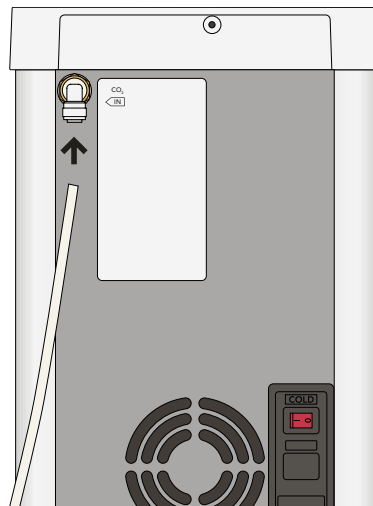
Connect the CO₂ cylinder

- Please note: The CO₂ cylinder is pressurised.
- The CO₂ cylinder must never lie horizontal.

1



2



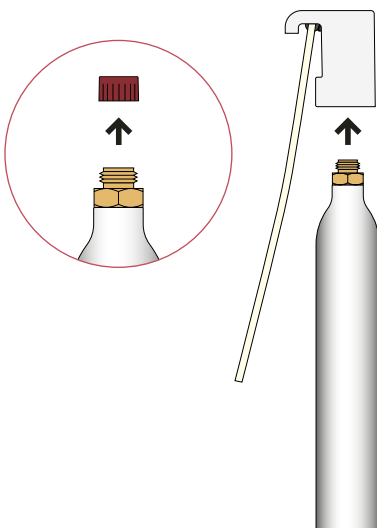
1 Connect the CO₂ pressure reducing valve

Push the clear CO₂ hose provided into the push fit connection on the CO₂ pressure reducing valve. The pressure reducing valve might look different than the example on the left.

2 Connect the CUBE unit

Remove the protective cap from the push fit CO₂ connection at the rear of the CUBE and push the CO₂ hose into the coupling.

3



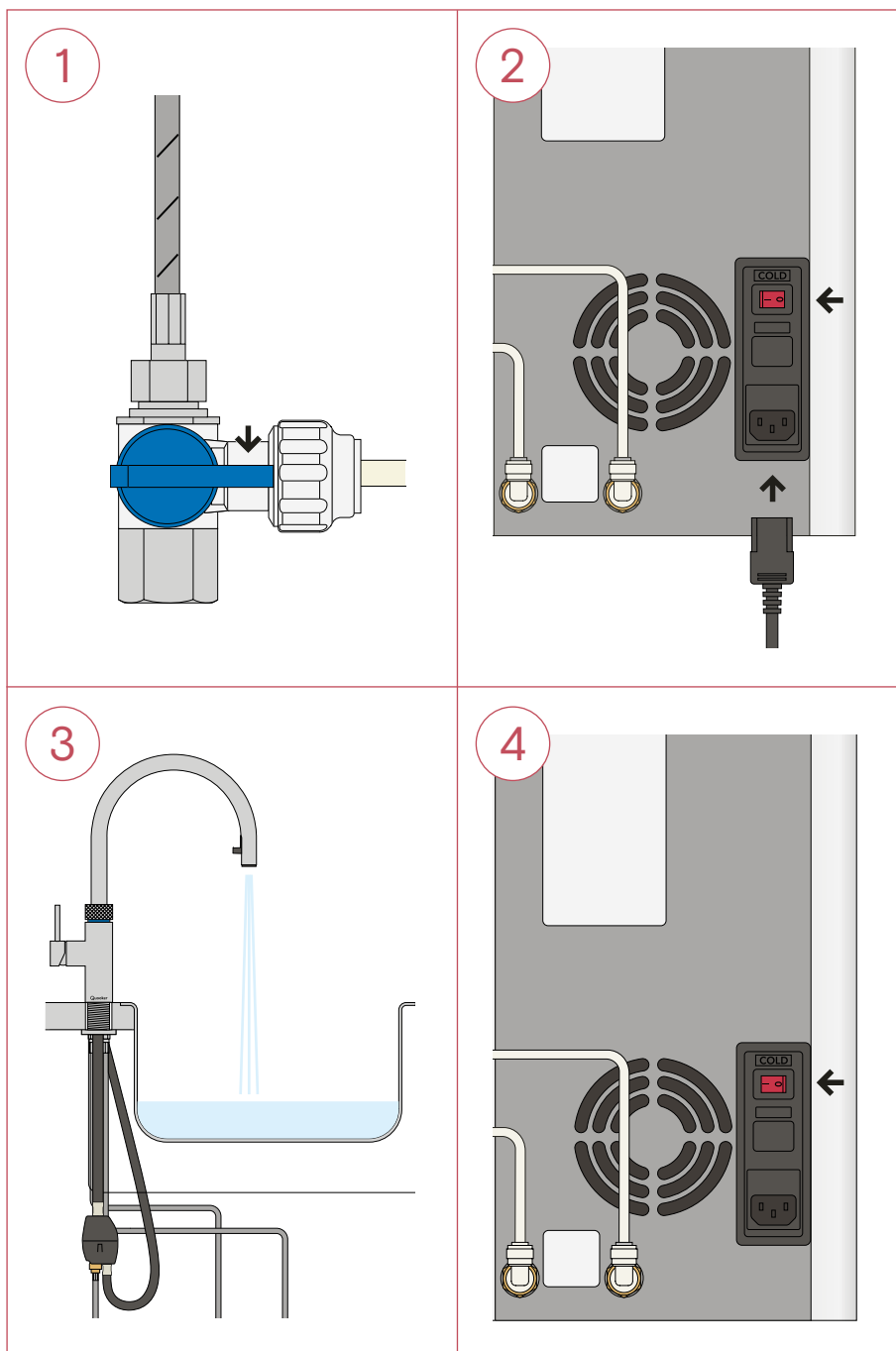
3 Connection to the CO₂ cylinder

Hold the CO₂ pressure reducing valve vertically. If necessary, remove the protective cap of the CO₂ cylinder and screw it into the CO₂ pressure reducing valve until it cannot be tightened any further. It is important that it is thoroughly tightened so that a tight seal is formed. Some gas may escape and a hissing noise may be heard. This is perfectly normal, but it is important that you ensure the cylinder is tightly screwed in.

D

Prepare the CUBE for use

- Depending on the temperature of the cold mains water supply, it takes about 40 minutes for the water in the CUBE's tank to cool down completely. The first time after installation of the CUBE, it will take about 60 minutes.



1 Switch on the water

Switch on the mains water supply. Open the CUBE stop valve by turning the blue handle. Check for leaks.

2 Connect the power supply

Make sure that the "COLD" switch on the rear of the CUBE is set to "0". Connect the power cable provided to the CUBE. Connect both the CUBE and the Quooker tank to mains power sockets and switch on the sockets. Switch on the Quooker tank by pressing the "Q" button on the top of the tank.

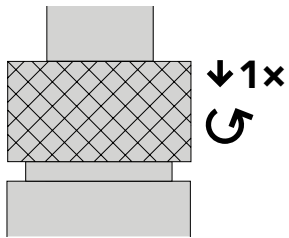
3 Flush the CUBE – filtered water

Flush the CUBE's filtered water through twice for one minute each time (the tap switches off automatically after one minute). To dispense filtered water, hold the textured ring down until the tap lights up blue, then turn it anti-clockwise. Initially, black water will flow out. This is from the built-in carbon filter and is completely harmless.

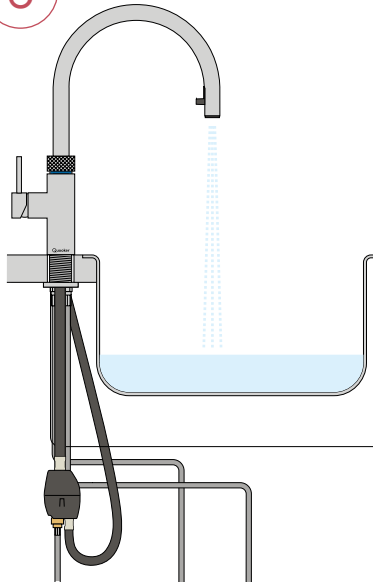
4. Switch on the CUBE

Set the "COLD" switch on the rear of the CUBE to "1". The CUBE will now start to cool the water and the pump will be activated.

5



6

**5 Venting the CUBE – sparkling water**

Dispense sparkling water by pressing the textured ring down and turning it anti-clockwise in one movement. The LED ring starts flashing blue and CO₂ is released. Initially only air and CO₂ will be released from the tap. Keep the tap open for ca 10 seconds. The pump will be activated and CUBE will fill with sparkling water. This can take up to 3 minutes. The pump may be very audible during this process.

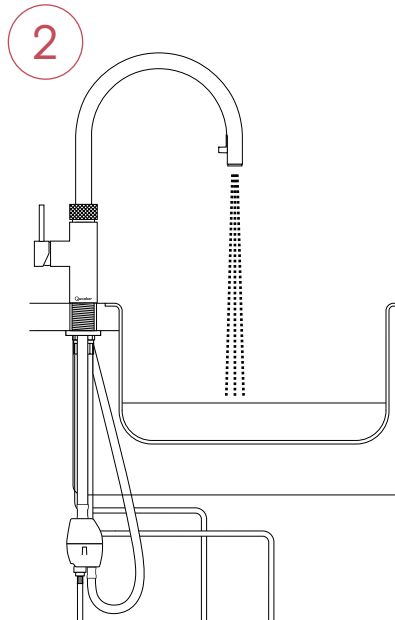
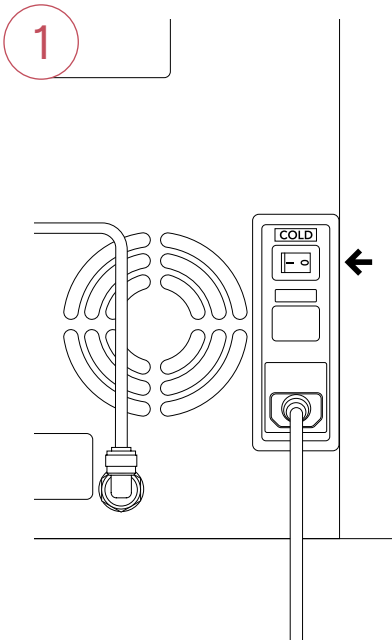
6 Flush the CUBE – sparkling water

Dispense sparkling water twice, for approximately one minute each time, to flush the system through before first use.

E

Remove the CUBE

- The CUBE must always be drained of water before servicing.



1 Switch off the CUBE

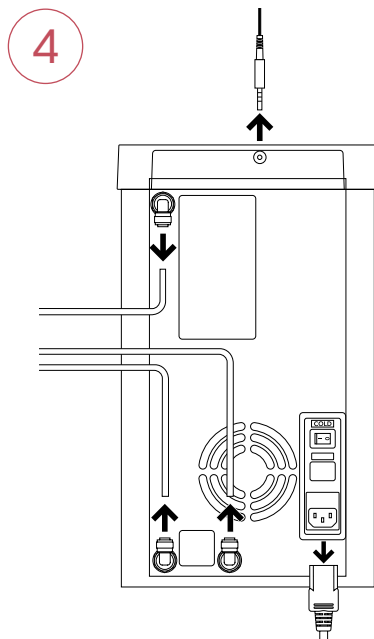
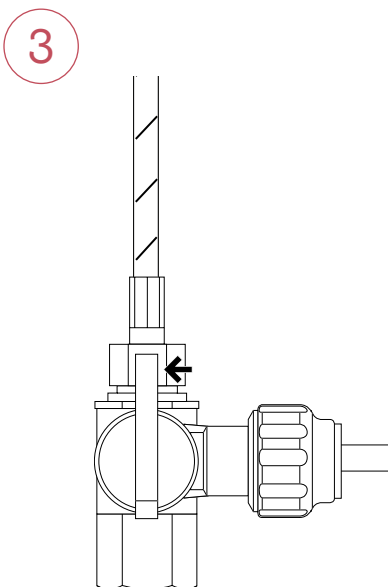
Make sure that the “COLD” switch at the back of the CUBE is set to “O”. Do not remove the power cable.

2 Empty the CUBE

Drain all sparkling water from the tap and turn it off when only CO₂ gas comes out. You may need to dispense sparkling water twice before the CUBE is completely drained.

3 Shut off the water

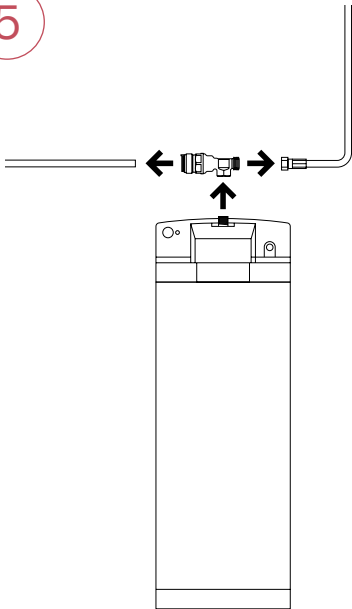
Shut off the water supply to the CUBE using the blue stop valve. Check that the system has been depressurised by dispensing filtered water from the tap. No water should come out. Unscrew the CO₂ cylinder from the CO₂ pressure reducing valve. A small quantity of CO₂ gas may escape.



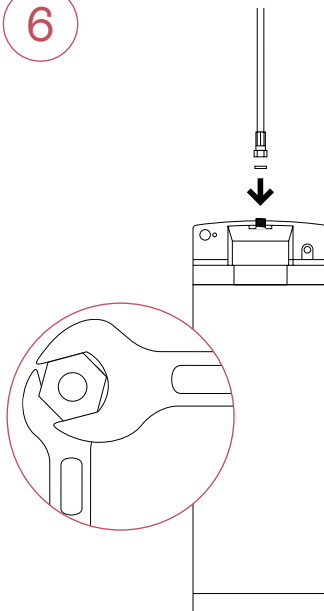
4 Remove the CUBE

Remove the blue connector from the blue port at the back of the CUBE and remove the plug from the power socket. Remove the hoses by pressing down on the grey ring on the push fit connections whilst pulling the hoses out. The CUBE tank must always be transported in appropriate packaging.

5



6

**5 Remove the T-joint**

Switch off the Quooker tank and remove the plug from the power socket. Remove the T-joint from the top of the Quooker tank.

6 Reconnect

Install the tap's boiling water hose onto the top of the tank using a 12 mm and a 14 mm spanner. Connect the plug to the socket and switch the Quooker tank on again by pressing the "Q" button on top of the tank.

Quooker®

Quooker Emirates LLC
15A Street, Showroom 17
Al Joud Center
Al Quoz, Dubai (UAE)
+971 4 330 3063
info@quooker.ae
www.quooker.ae