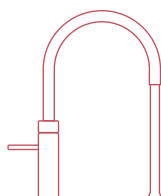


Installation guide COMBI

Before installing read this guide first



Quooker®

Introduction

The operation of the Quooker COMBI

The Quooker system consists of a vacuum-insulated tank, which is connected to the cold water supply under the sink and to the Nordic single tap, the Fusion tap or the Flex tap. Both boiling water and mixer water can be dispensed from the Fusion and Flex tap.

Inside the tank the water is heated electrically to approx. 108°C and is kept at this temperature. When boiling water is dispensed, cold water flows back into the tank at the same time and is heated automatically. If the entire content of boiling water (7 litres) is used in one go, the heating time is ca. 20 min.

Before the water leaves the tank it is purified by the HiTAC® water filter (High Temperature Activated Carbon). To extend the life of the filter, the water used for mixing the hot water is not filtered.

In addition to boiling water, the Quooker COMBI also supplies instant hot water. The COMBI supplies hot water by mixing boiling water from the Quooker tank with cold water from the water mains inside the mixing valve. A thermostatic control element inside the valve keeps the outgoing water temperature constant. This temperature can be set between 40°C and 60°C with the grey knob on the mixing valve. The mixing valve is suitably protected against a loss in water pressure, preventing any boiling water from flowing out of the mixer tap.

The grooved handle on the tap lights up when the water is running to warn the user that the water is boiling. As an additional safety feature, the Nordic single tap is height-adjustable and the Nordic single tap, the Fusion tap and the Flex tap are fully insulated.

Despite all the safety features incorporated in the product, anyone using the Quooker system must keep in mind the risks of using boiling water in general. Incorrect use can lead to injury. Therefore always read the manual carefully before use.

Installation, maintenance and warranty

Installing the Quooker requires connections to the mains water supply and the electrical system. The Quooker is supplied with a handy connection kit for simple installation. You must not connect the Quooker to a reverse osmosis system or to a water softener that reduces the pH value.

For optimally purified Quooker boiling water, we recommend changing the HiTAC® filter cartridge every 3 – 5 years. If necessary, the tank can be descaled. In areas with hard water this should be performed more regularly.

The warranty period is two years, according to our General Terms of Business.

Users

The Quooker tap can be used by children above the age of eight and people with diminished physical, sensory or intellectual abilities provided they are supervised or have been instructed on the safe use of the device. Inform people who are unfamiliar with the Quooker system about safe use and the possible dangers associated with the use of the boiling-water tap. Please note: incorrect use may result in injury. Prevent children from using the tap as a toy and do not allow children to clean or maintain the product unsupervised. Keep the plug out of reach of small children.

The Quooker system is suitable for household use and commercial use such as in staff kitchens at shops, offices, farms and other business premises and for use by visitors at hotels, motels, bed & breakfasts and other residential accommodation.

Always follow the installation method described in the manual. Avoid spilling water on the plug. If defective, the power plug may only be replaced by a qualified technician. Make sure you let the tank cool off adequately before disconnecting it. The fastest way to do this is as follows: turn off the Quooker, but leave the plug in the socket. Then open the boiling-water tap and turn it off once the water runs cold. You can find a more detailed explanation for disconnecting the tank in chapter E.

Tips for use and the installation manual can also be found on our website: quooker.ae

Declaration of conformity

Quooker Nederland B.V., Staalstraat 13, 2984 AJ Ridderkerk (The Netherlands) herewith declares, on our own responsibility, that the products Quooker COMBI and Quooker COMBI+ are in accordance with the conditions of the following directives:

- 2014/35/EU Low Voltage Directive (LVD)
- 2011/65/EU Restriction of Hazardous Substances (RoHS) Directive
- 2014/30/EU Electromagnetic Compatibility Directive (EMCD)
- 2009/125/EC Ecodesign energy-related products Directive
- 2014/68/EU Pressure Equipment Directive

and are in conformity with the following standards:

General product safety household and similar electrical appliances

EN 60335-1:2012 + AC:2014 + A11:2014

EN 60335-2-15:2002 + AC:2005 + A1:2005 + AC:2006 + A2:2008 + A11:2012 + A11:2012/AC:2013
+ EN 60335-2-15:2016

EN 60335-2-21:2003 + A1:2005 + AC:2007 + A2:2008 + AC:2010

Public exposure to electromagnetic fields (EMF)

EN 62233:2008 + AC:2008

Electromagnetic compatibility (EMC)

EN 55014-1:2017 + EN 55014-1:2006 + A1:2009 + A2:2011

EN 55014-2:2015 + EN 55014-2:1997 + AC:1997 + A1:2001 + A2:2008

EN 61000-3-2:2014

EN 61000-3-3:2013

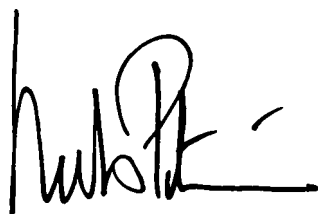
Restriction of hazardous substances

EN 50581:2012

Ecodesign water heaters

Regulation (EU) 814/2013

The Netherlands, Ridderkerk, December 2021

A handwritten signature in black ink, appearing to read 'Niels Peteri', with a stylized flourish at the end.

Niels Peteri, Director

Technical specifications

Tank	COMBI
Voltage	230 V
Wattage*	2200 W
Capacity	7 litres
Heating-up time*	20 minutes
Standby power consumption*	10 W
Tank height	48 cm
Tank diameter	20 cm
Min. mains pressure	200 kPa (2 bar)
Max. mains pressure	600 kPa (6 bar)
Max. working pressure	800 kPa (8 bar)
Mounting bracket optional	yes
Safety features	<div><div>- maximum temperature fuse</div><div>- pressure relief valve in solenoid valve 800 kPa (8 bar)</div></div>
HiTAC® water filter	High Temperature Activated Carbon

*These are average values.

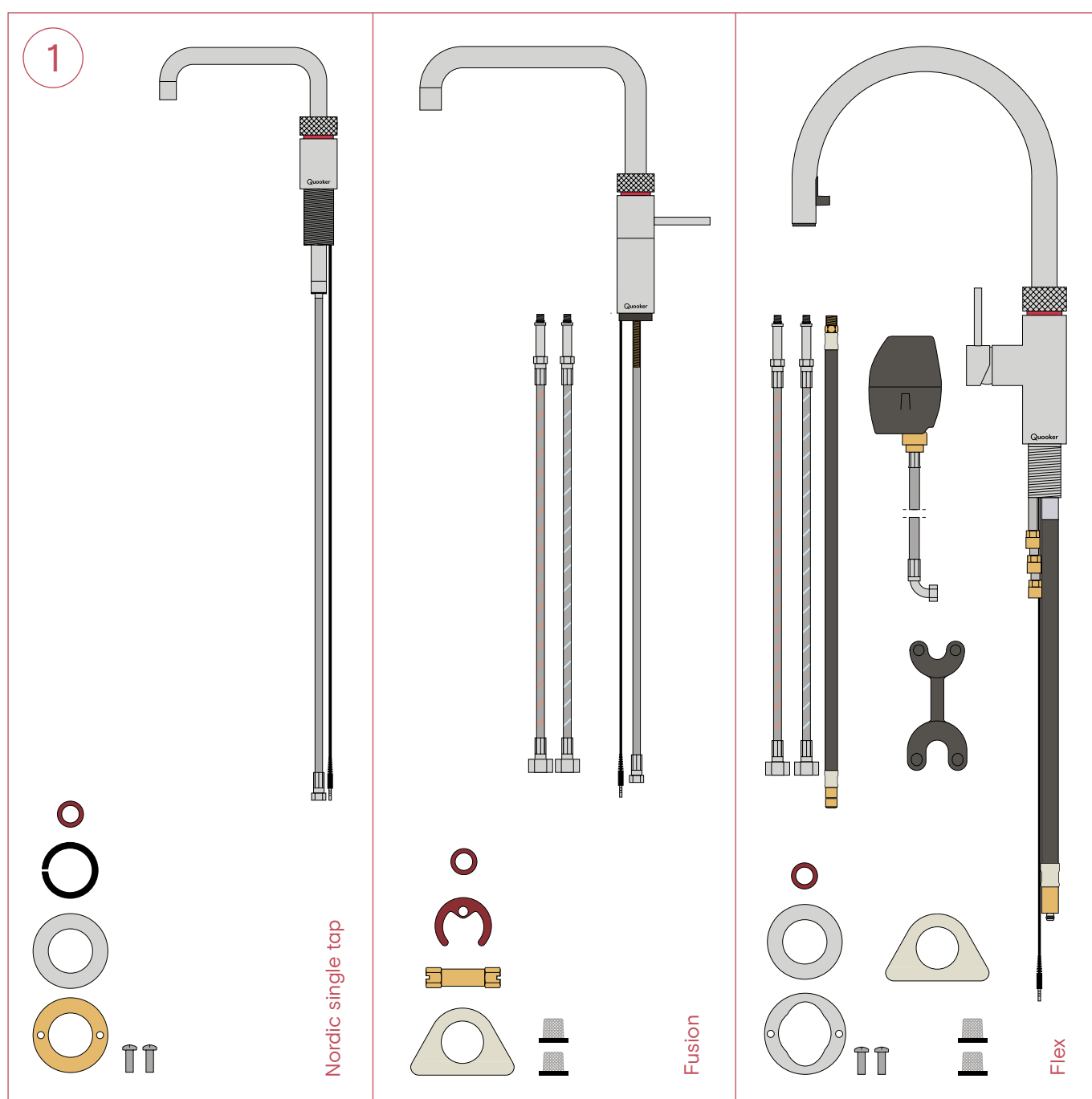
Energy label

Declared load profile	XXS
Water heating energy efficiency class	A
Water heating energy efficiency	36%
Annual electricity consumption	511 kWh/A
Warm water temperature settings of the water heater	40 °C - 60 °C
Sound power level	- dB

Tap	Nordic single tap	Fusion, Flex and mixer tap
Tap hole size	32 mm	35 mm
Recomm. temp. mixing water	-	60 °C
Bezel available	yes	yes

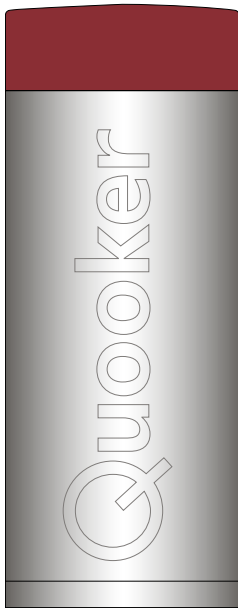
Contents of the pack

1. - Nordic single tap, packing ring, centring ring, steel ring, brass sink nut and two screws
 - or Fusion tap, packing ring, brass fixing plate, fixing nut, white tap support (for thin work tops) and two inlet hose screens
 - or Flex tap, hoses, fibre washer(s), steel washer, screw ring with two screws, coupling with boiling water hose, white tap support, two inlet hose screens and quick-release tool.

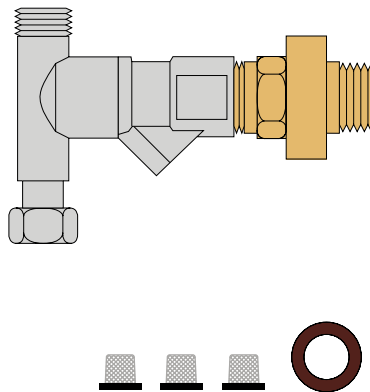


2. COMBI tank
3. T-joint, inlet hose screens and fibre washer
4. Isolation valve with filter
6. Mixing valve and check valve

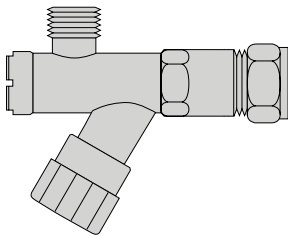
2



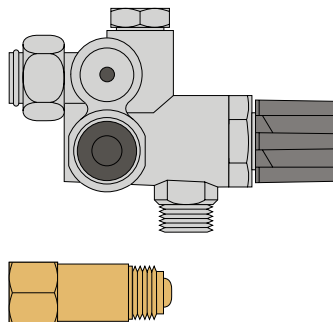
3



4



5



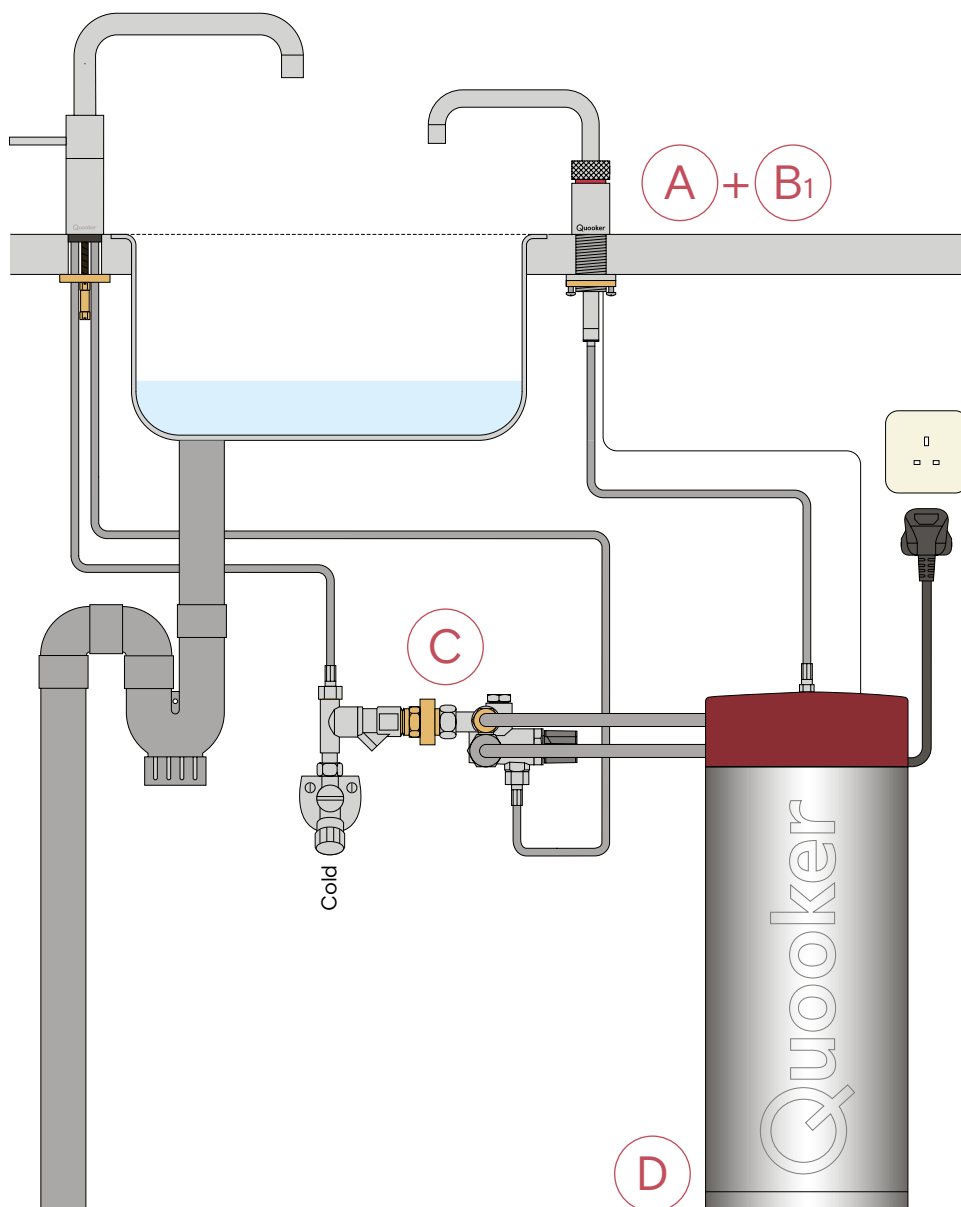
Overview of Nordic single tap installation

It is recommended that you install the Quooker in the following order:

- A. Drilling hole
- B1. Fitting Nordic single tap
- C. Connecting water
- D. Connecting tank

Note: Bear in mind that the tank, mixing valve and socket must remain accessible for servicing.

For an overview of the Fusion tap installation, please refer to the next page and for the Flex tap to the page after that.



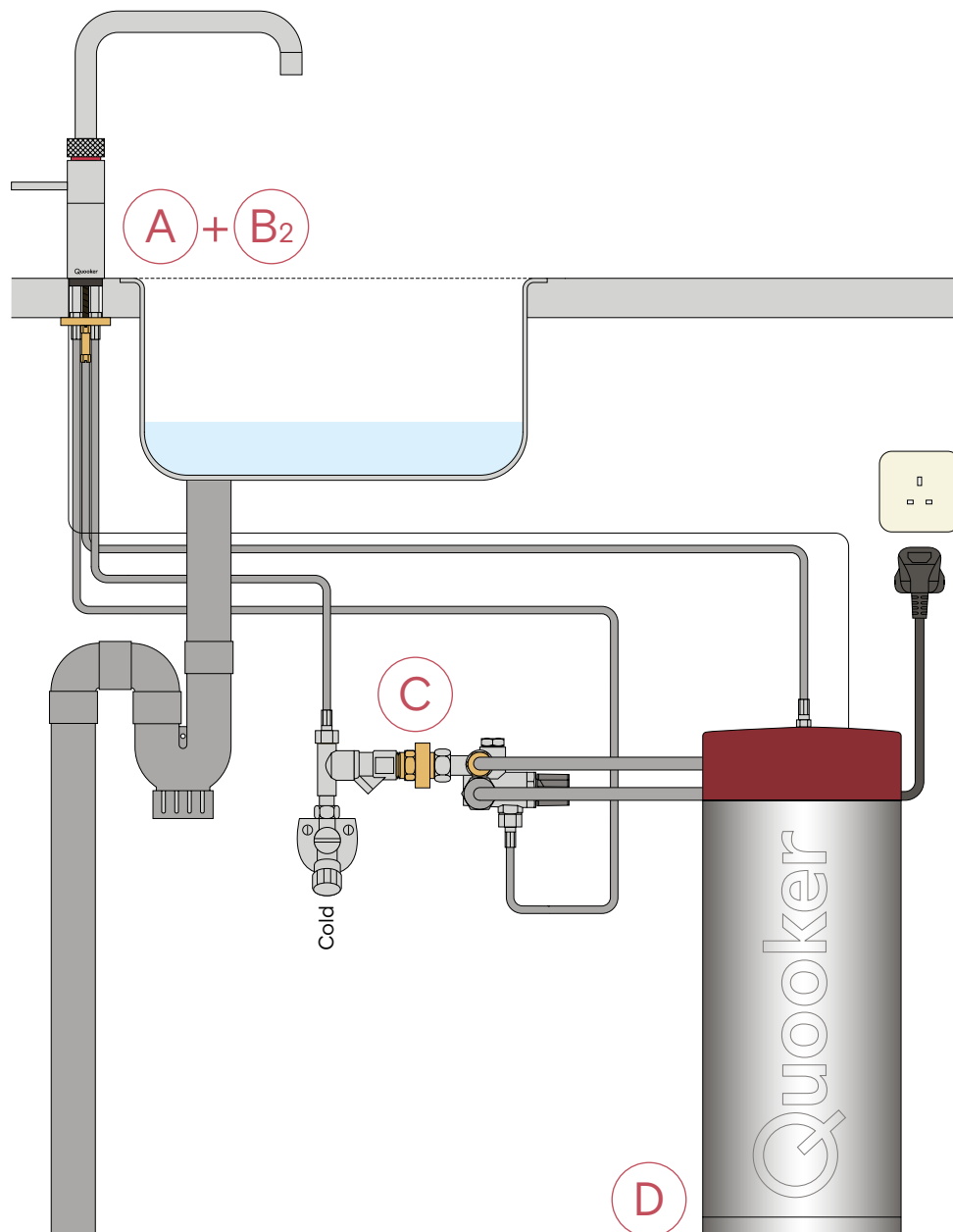
Overview of Nordic single tap installation

It is recommended that you install the Quooker in the following order:

- A. Drilling hole
- B2. Fitting Fusion tap
- C. Connecting water
- D. Connecting tank

Note: Bear in mind that the tank, mixing valve and socket must remain accessible for servicing.

For an overview of the Flex tap installation, please refer to the next page.



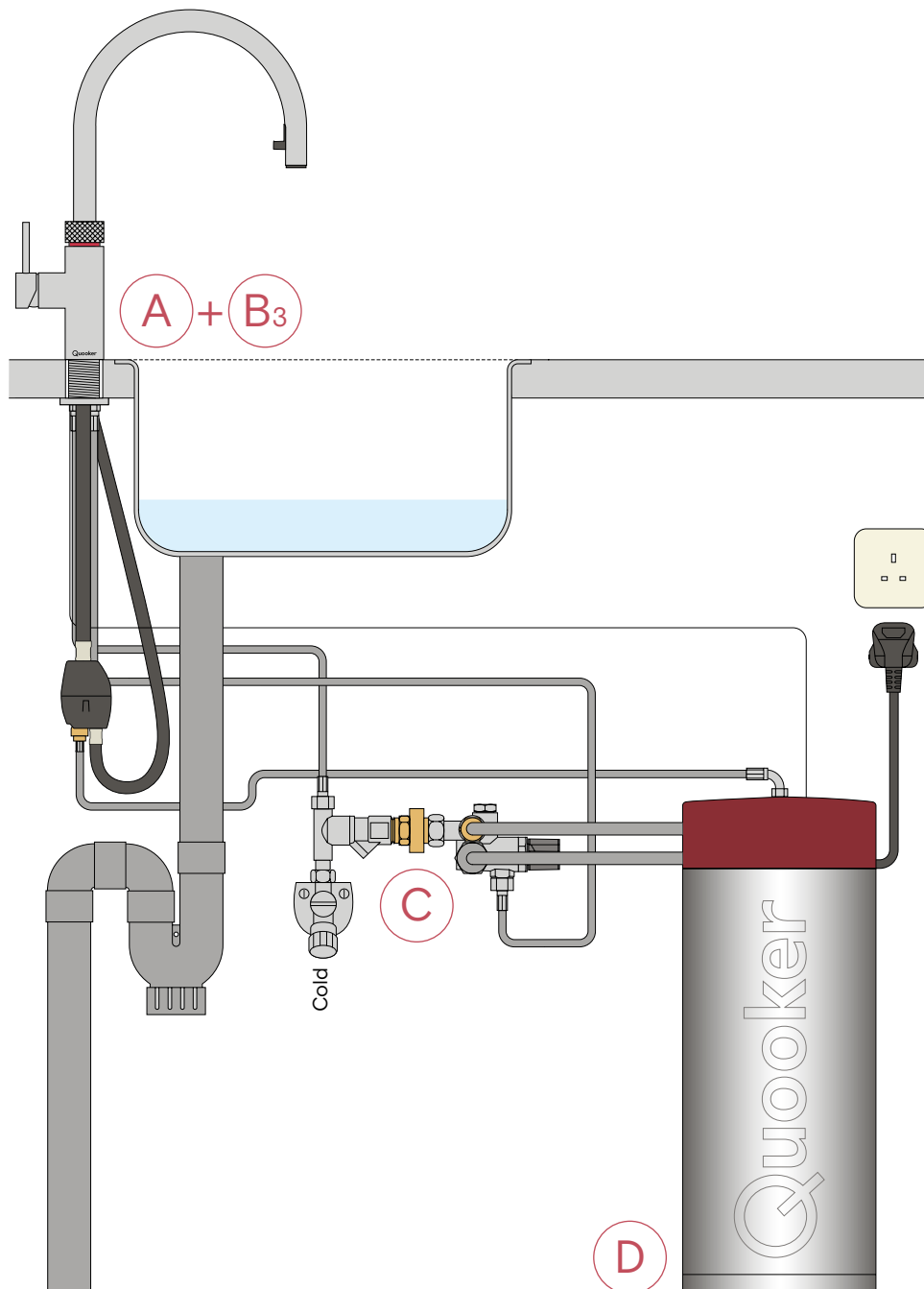
Overview of Flex tap installation

It is recommended that you install the Quooker in the following order:

- A. Drilling hole
- B3. Fitting Flex tap
- C. Connecting water
- D. Connecting tank

Note: Bear in mind that the tank, mixing valve and socket must remain accessible for servicing.

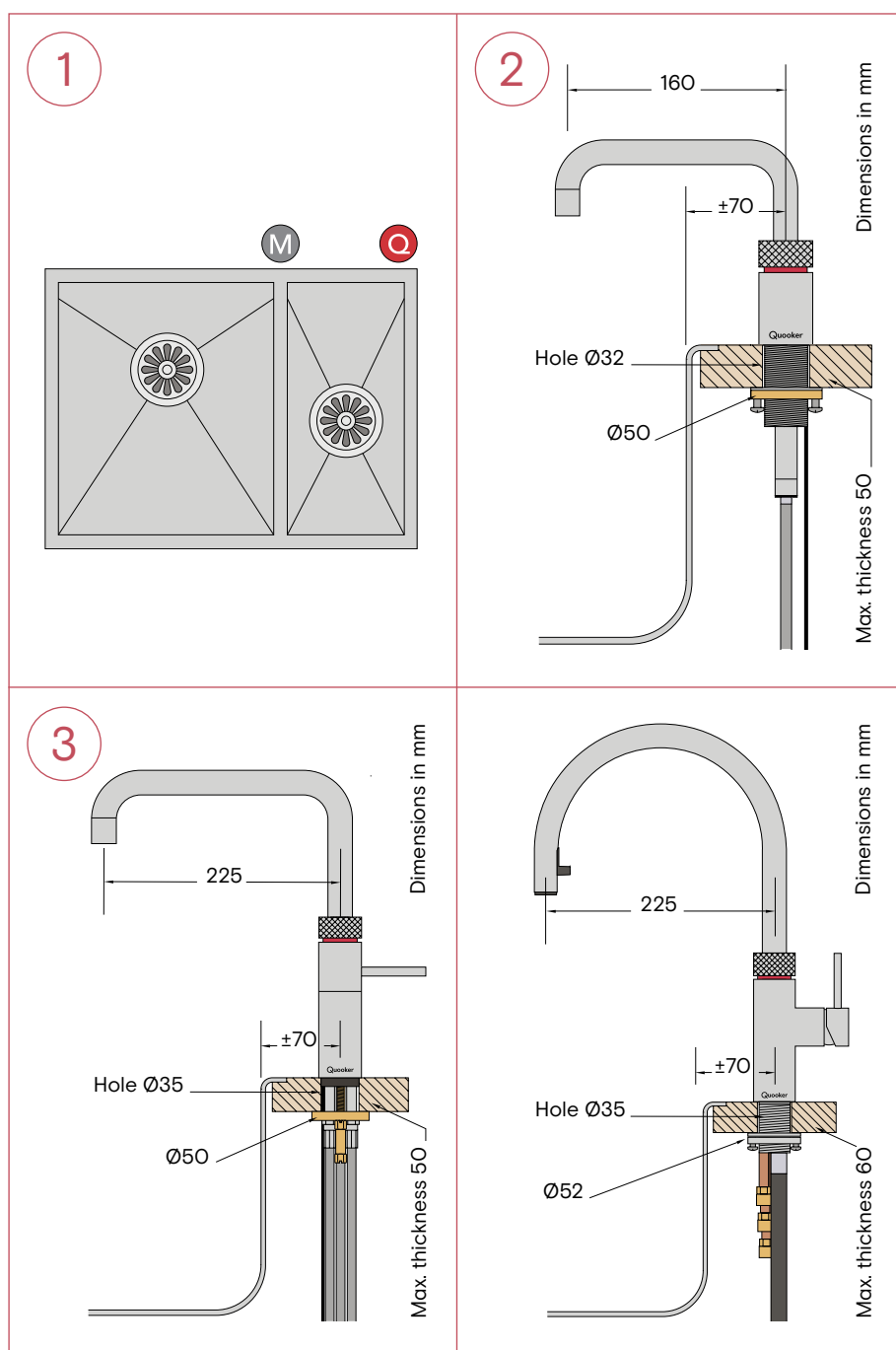
For an overview of the Flex tap installation, please refer to the next page.



A

Drilling hole

- Note: The tap hole for the Nordic single tap should be 32 mm in diameter. The Fusion and Flex tap hole should be 35 mm in diameter.
- The Nordic single tap should ideally be positioned at the corner of the sink to enable use above the sink or the work top.
- Note: It must be possible to move the spout of the Nordic single tap freely up and down. When the spout is in its lowest position it projects ca. 25 cm below the work top. Bear this in mind when fitting the inlet combination, sockets and the like.
- Note: The Flex tap coupling must be able to move freely. When the hose is not withdrawn it hangs approximately 40 cm below the work surface top. Make allowances for this when fitting the inlet combination, power sockets and so forth.



1. Select position Nordic single tap

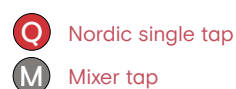
Select a suitable position for the Nordic single tap based on the type of sink and position of the mixer tap.

2. Drilling hole for Nordic single tap

Using the correct drill bit, drill a hole of 32 mm through the work top for the Nordic single tap. Note: For the Nordic mixer tap please refer to the separate guide. In the case of a hole of 35 mm or larger, use the centring ring provided.

3. Drilling hole for Fusion or Flex tap

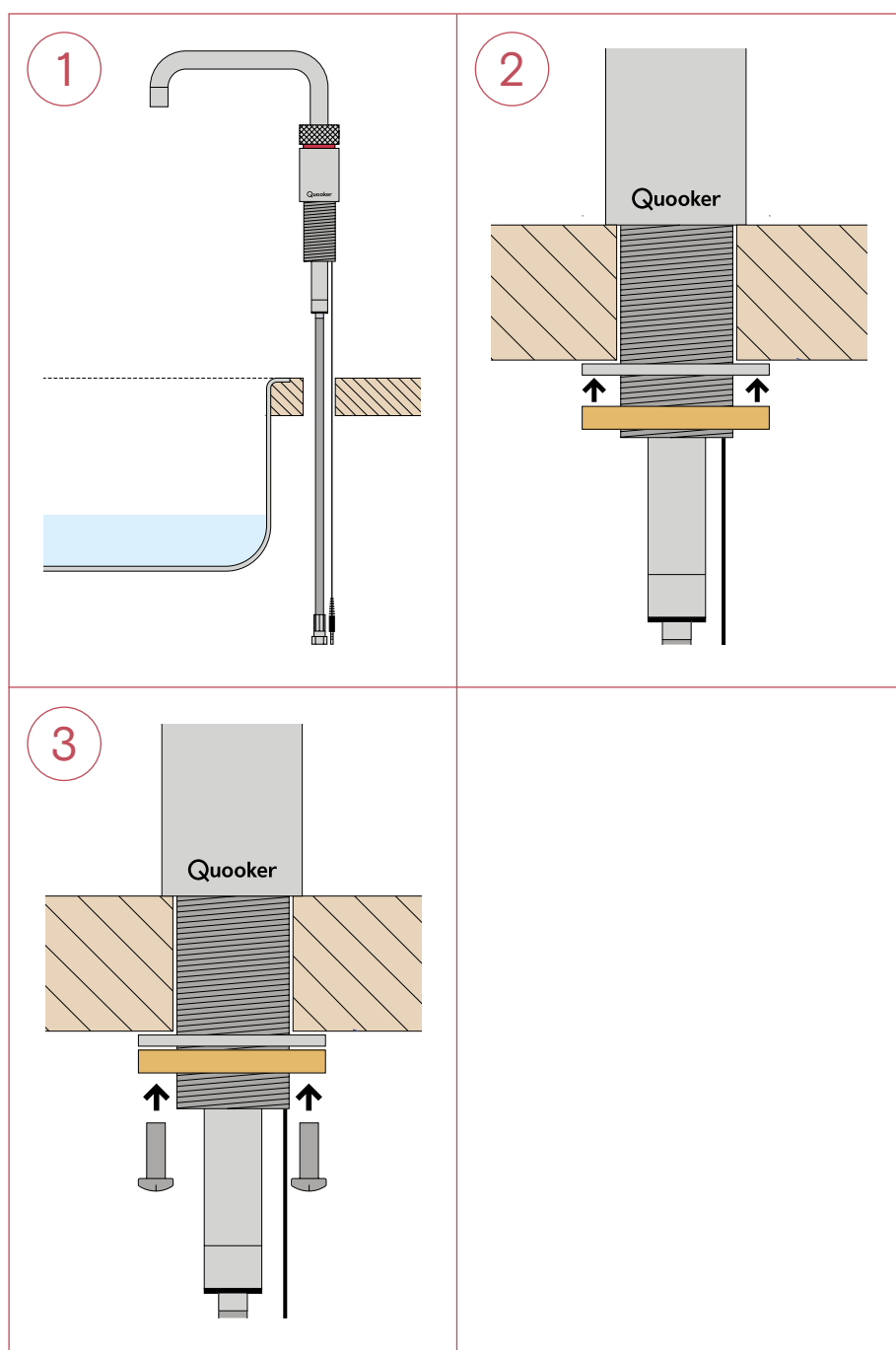
Select a suitable position for the tap. Using the correct drill bit, drill a hole of 35 mm through the work top. In this, take account of the range of the tap's spout from the centre of the tap hole.



B1

Fitting Nordic single tap

- The total length of the hose between the boiling-water tap and tank is only 70 cm. The tank must therefore be fitted close to the tap. Extension hoses are available in different lengths but are not normally required.
- The small fibre washers supplied with the tap rings are not required yet at this point. One will be used for connecting the tap and tank hose (see section E), the second one is a spare.



1. Tap through work top

Push the tap through the hole in the work top. Note: When fitting the tap in a 32 mm hole, the black plastic ring needs to be removed from the tap first.

2. Securing the tap

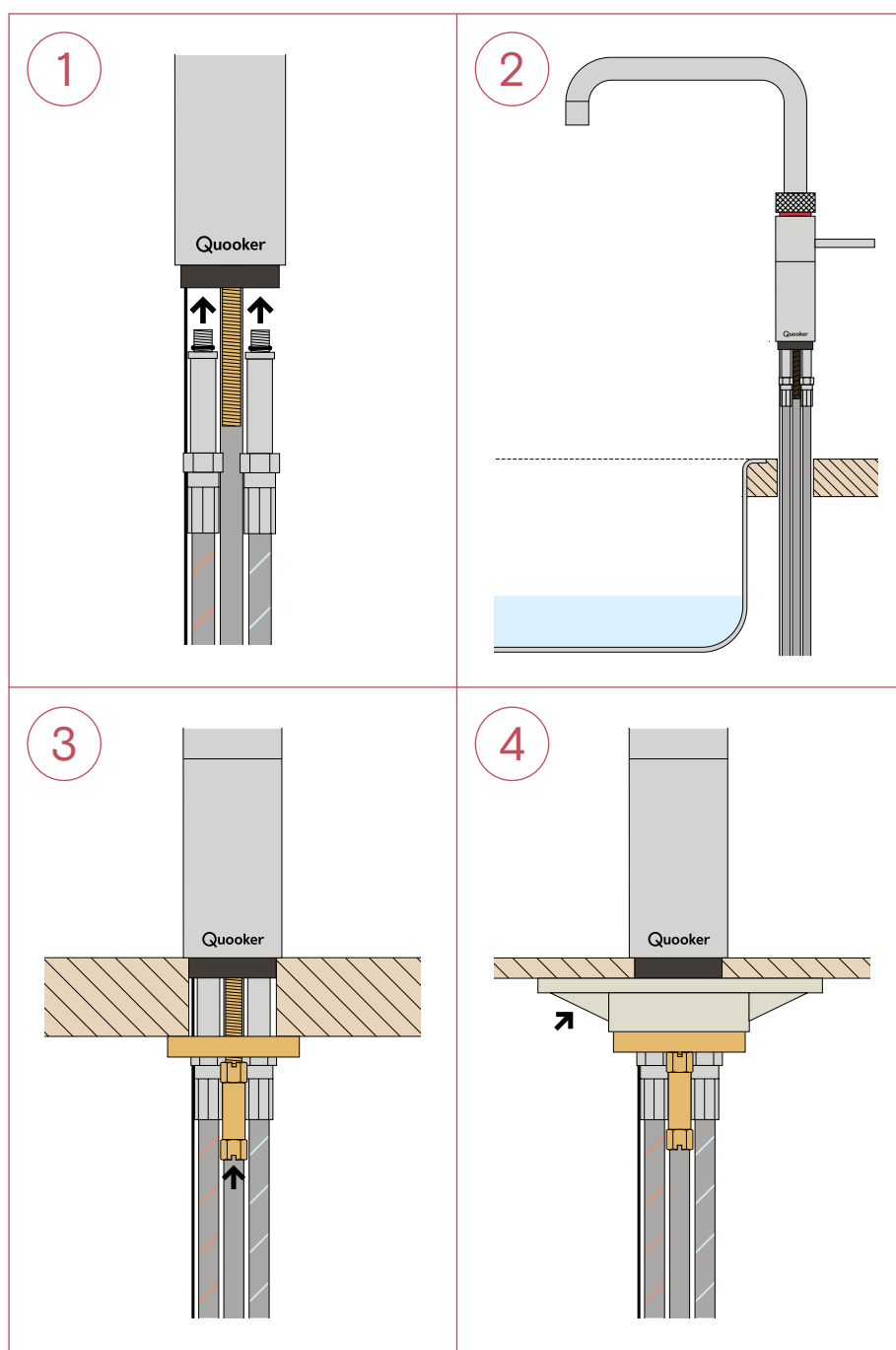
Set the tap to the desired position and secure it with the metal ring and screw ring supplied.

3. Securing tap screws

Tighten the screws in the screw ring.

B₂

Fitting Fusion tap



1. Mount the hoses

Mount the hot water and cold water hoses on the tap.

2. Tap through work top

Push the tap through the hole in the work top.

3. Securing tap

Position the brass fixing plate around the hoses. Screw the fixing nut onto the tap thread. Adjust the position of the tap to ensure that the Quooker logo is facing the user. When the handle is in the cold position, it will be parallel to the edge of the work top. Tighten the fixing nut with a pipe wrench, socket wrench or spanner.

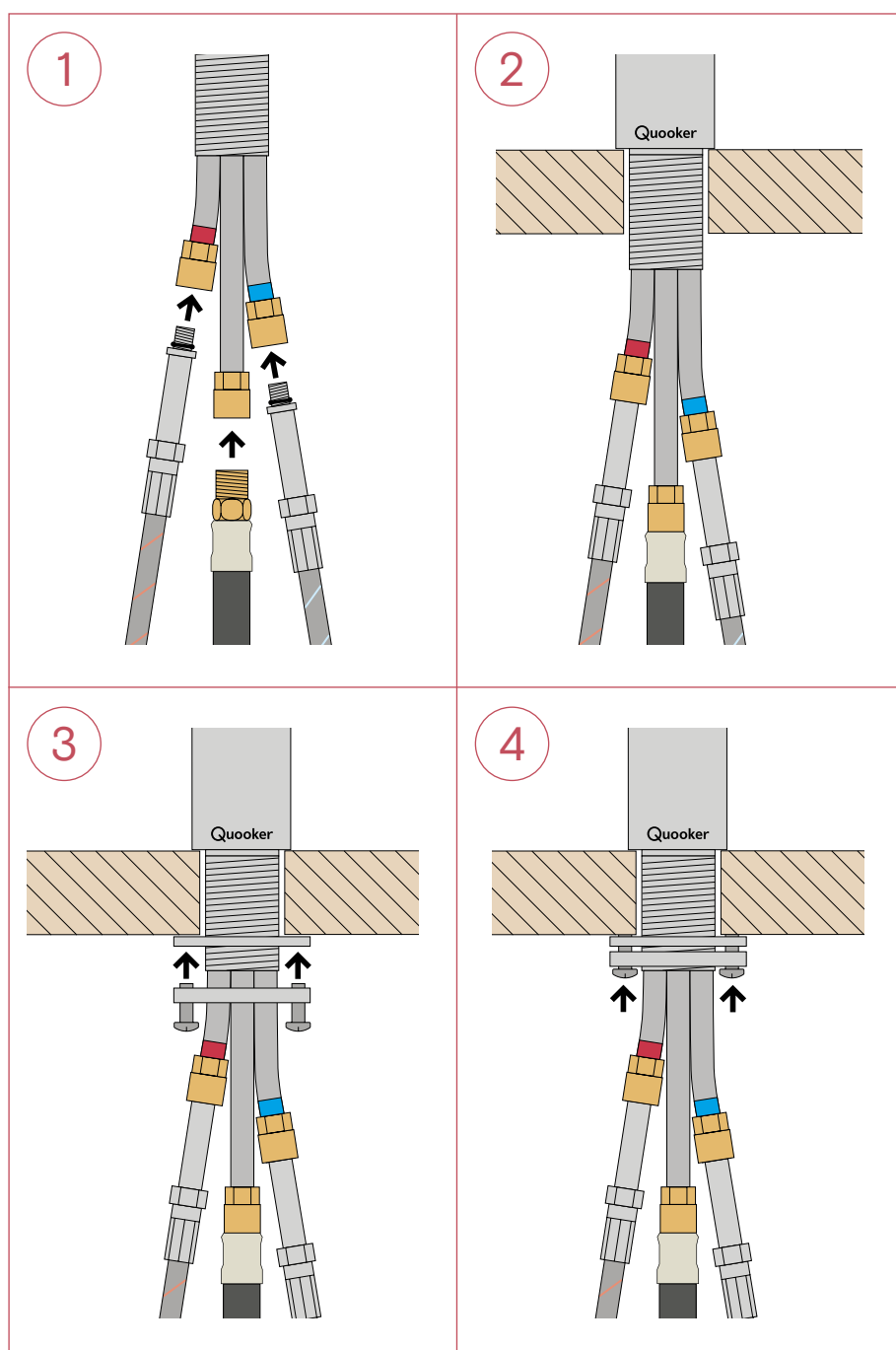
4. Fitting to thin work top

When fitting to a thin work top, use the white tap support underneath the brass fixing plate.

B3

Fitting Flex tap

- When installing the tank it is necessary to take into account that the Flex tap counterweight must be able to move up and down freely. When the hose is not withdrawn it hangs approximately 40 cm below the work surface.
- Note: When fitting the tap to a thin work top use the white tap support before placing the metal washer and threaded ring around the hoses.



1. Fit hoses

Fit the hot, cold and mixer water hose to the tap.

2. Tap through work top

Push the tap through the hole in the work top.

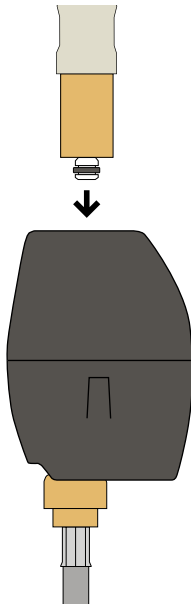
3. Tighten the brass plate

Put the tap in the required position and fully tighten the brass plate.

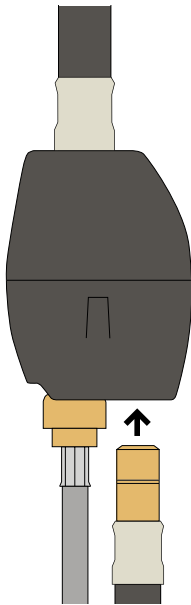
4. Securing tap screws

Tighten the screws in the screw ring.

5



6

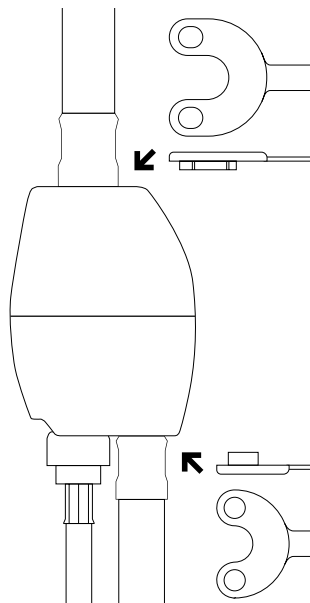


5. Attach the coupling

Click the pull-out hose into the coupling's quick-release fitting while ensuring that the hose pillar is fully inserted.

6. Fit the mixer water hose

Click the mixer water hose into the coupling's quick-release fitting while ensuring that the hose pillar is fully inserted.



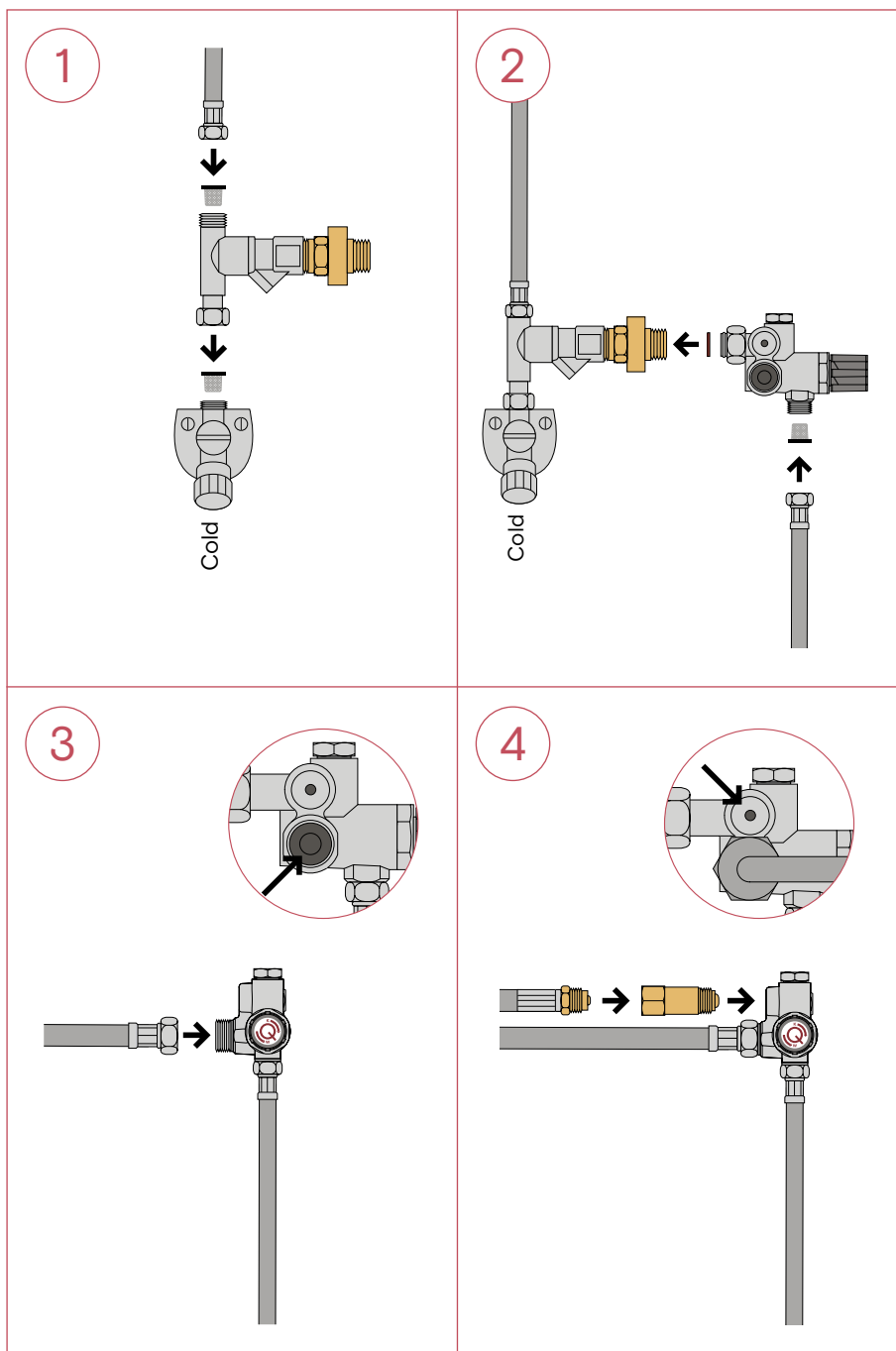
If necessary

Detach coupling. Use the quick-release tool to detach the mixer water hoses from the coupling. Press the quick-release tool flat against the coupling to hold it still. This enables the hose to be extracted.

C

Connecting water

- The Quooker operates under mains water pressure and must always be fitted to the water pipe with the supplied inlet valve.
- The Nordic single tap, the Fusion tap or de the Flex tap must be installed according to the locally applicable regulations.



1. Connecting T-joint and hoses

Prior to installation, close the corner shut-off tap or turn off the water supply to the main tap. If necessary, fit the supplied corner shut-off tap. Use an inlet hose screen to connect the T-joint to the corner shut-off tap. Use the inlet hose screen to connect the cold water hose to the T-joint.

2. Fitting the mixing valve

Use the supplied fibre washer to connect the mixing valve to the T-joint. Make sure that the temperature setting knob of the mixing valve remains accessible. This can be turned to adjust the temperature (between 40 °C and 60 °C). Connect the Fusion or Flex mixer tap hot water hose to the mixing valve using an inlet hose screen.

3. Installing the hose

Put the Quooker reservoir in place and connect the hose to the mixing valve as indicated in the adjacent image. The connection is equipped with a compression fitting so no gasket is required.

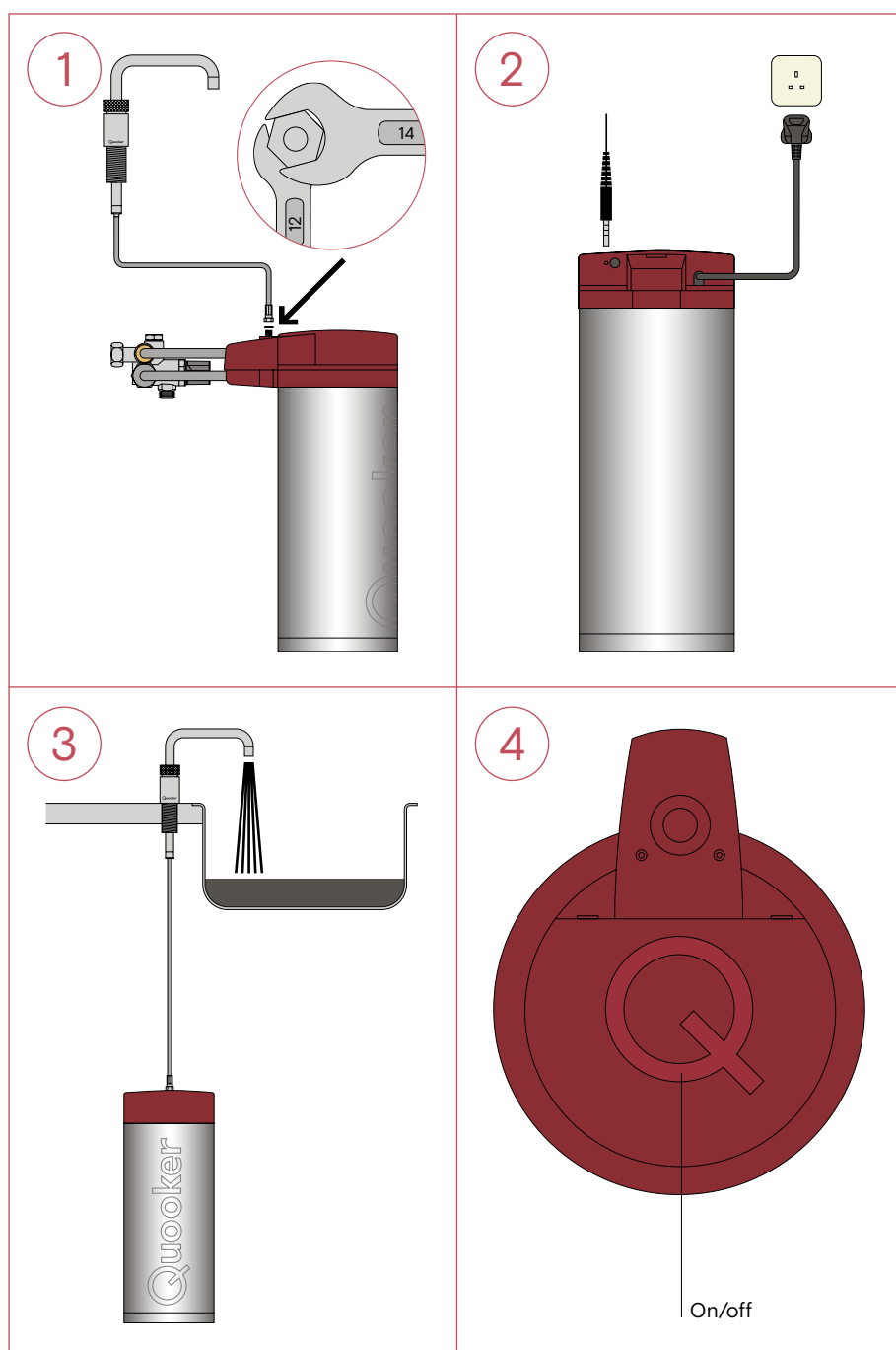
4. Installing the check valve and hose

Fit the check valve to the remaining mixing valve connection. Then fit the other Quooker reservoir hose to this. The connections are equipped with compression fittings so no gasket is required.

D

Connecting tank to tap

- The Quooker tank is supplied with a UK 3 pin plug and requires a standard 13 amp earthed socket.
- The light ring on the boiling-water tap will light up to indicate when the water is being heated inside the tank.
- If the mains lead is damaged, it must be replaced by the manufacturer, their agent or a qualified technician.
- The 'Q' on the lid is the on/off switch.



1. Connecting tank and tap

Position the tank. Using size 12 and 14 socket spanners, connect tap hose to fitting at the top of the tank.

2. Electrical connection

Insert the LED cable into the hole provided at the back of the tank cover. Connect the tank to an earthed socket. Do not switch on until the tank is filled with water.

3. Filling tank

Open tap and isolation valve. Check for leaks. Rinse Quooker for a few minutes, until the water is clear. The initial black colouring is activated carbon from the filter and completely harmless.

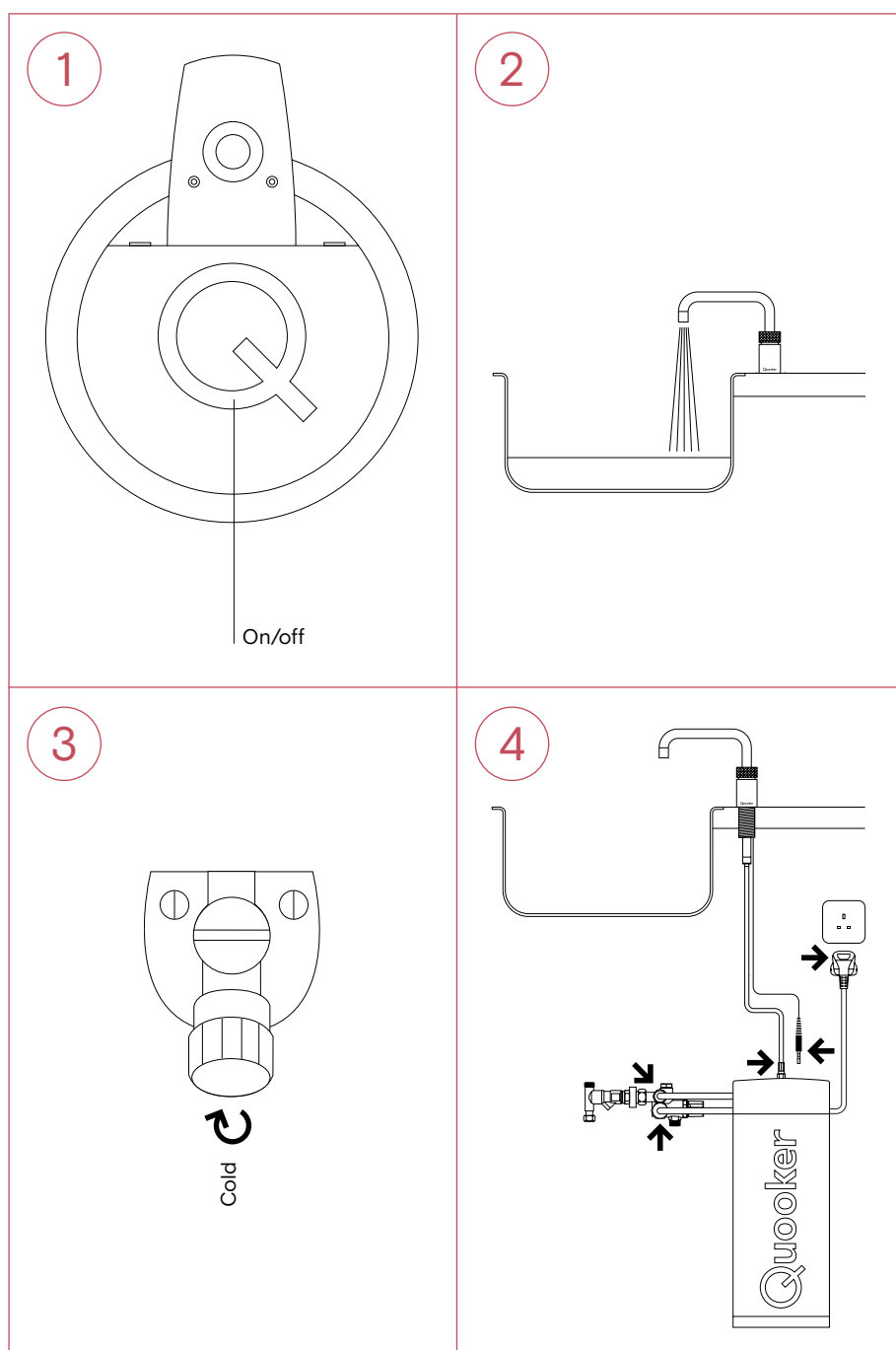
4. Switching on

Switch the tank on.

E

Disconnecting tank

- In case of service.



1. Switching off

Press the on/off switch at the top of the tank to switch it off. Do not unplug the tank from the power socket yet.

2. Draining

Open the boiling-water handle of the tap and leave the water running until it runs cold. Then close the tap again. Note: At first, the water is very hot.

3. Isolating

Close the main shut-off valve or the isolation valve. Check that the Quooker is depressurized by opening the boiling-water handle again. If it is depressurized, no water should flow out of it.

4. Disconnecting

Unplug the LED cable from the lid. Release the hose connections and pull the plug out of the socket. Remove the inlet valve and reconnect the cold water hose to the isolation valve using the fibre washer. Open the main shut-off valve or the isolation valve.

Quooker®

Quooker Emirates LLC
15A Street, Showroom 17
Al Joud Center
Al Quoz, Dubai (UAE)
+971 4 330 3063
info@quooker.ae
www.quooker.ae